

SEA FOX BOAT'S DISCLAIMER

The following Owner's Manual is provided for information and educational purposes only and is not intended to offer or provide legal advice or create a contractual relationship between Sea Fox Boat Company and the owner of any Sea Fox brand vessel. Please beware that as a vessel owner you have non-delegable responsibilities regarding the safety, maintenance, fitness, and operation of your vessel and the extent of such responsibilities is ultimately determined by Federal law and regulations, the general maritime law of the United States, the laws and regulations of the states and territories of the United States, or the laws and regulations of the country where you operate your vessel. To fully understand your responsibilities as a vessel owner, and before operating or letting any third-party operate your vessel, we recommend that you consult the services of a qualified lawyer in admiralty and maritime law.

TABLE OF CONTENTS

Introduction	3	Electrical Schematics	18
Specifications	3	12V Battery Switch Panel	18
Designated Occupant Seating	4	12V Battery Switch Panel (continued)	19
Safety Decals	5	Hull Harness	20
Plumbing Schematics	7	Switch Panel	21
Fuel System	7	Switch Panel (continued)	22
Bilge System	8	Breaker Panel	23
Fresh Water System	9	Breaker Panel (continued)	24
Raw Water System	10	Deck Harness, Starboard	25
Drains	11	Deck Harness, Port	26
Drains (continued)	12	Hardtop Harness	27
Livewell (Pressurized)	13	Windlass Switch Panel	28
Livewell (Aquarium)	14	Battery Wiring	29
Waste System	15		
Air Conditioning	16		
B150 Transducer	17		

This Page Intentionally Left Blank

INTRODUCTION

Congratulations and Welcome Aboard! With so many boat brands to choose from, we want to congratulate you on your decision to choose Sea Fox Boats. For more than 24 years, Sea Fox offers the finest hand-crafted saltwater boats carefully balanced with the build-quality, features, styling and performance for the fairest price. Our passion for boating is evident in every model we make and we appreciate that you've noticed the Sea Fox difference.

We share your love for the moments spent on the water with friends and family, which is why every Sea Fox boat offers a unique blend of fishing/family options, technologies and innovative features. Your choice of a Sea Fox affirms that you have performed your research and compared the value of your model with the competition.

Whether you are new to the boating lifestyle or an old salt, we ask that **you and all other operators** read the owner's manual, this supplement, and all other literature provided with the boat **before** operating the boat or any equipment. We also recommend that all operators enroll in a boating safety course available online - see References and Contact Information in this section for education resources online.

This supplement contains model-specific information not included with the owner's manual. This manual is not intended to be a replacement for specific product literature provided by engine, accessory or other major equipment manufacturers, but rather to supplement that information.

Because of our philosophy of continuous product improvement, this manual serves as a general guide only, so the specifications and illustrations used may not match the equipment on your boat and are intended only as general reference views.

We welcome you to the Sea Fox family and wish you many years of boating enjoyment!

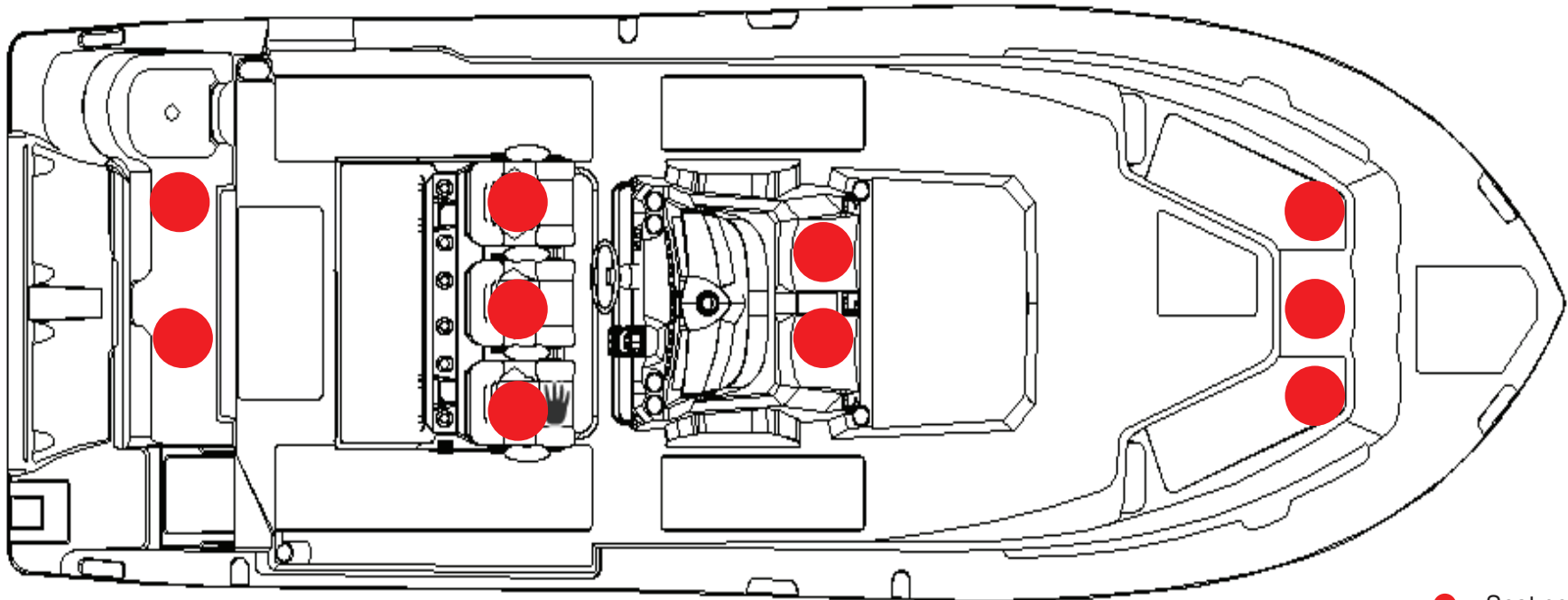
SPECIFICATIONS

Max. Weight Capacity	Yacht Certification
Persons	Yacht Certification
Persons Weight	Yacht Certification
Max. HP	900 hp (671 kw)
L.O.A.	32' (9.75 m)
Beam	10' 8" (3.25 m)
Draft	24 in. (0.61 m)
Height, Keel to Top (Light Folded)	**
Bridge Clearance Hard Top	115 in. (2.92 m)
Max. Weight Boat (w/ Fluids, Largest HP)	14511 lbs (6582 kg)
Fuel Tank Capacity	313 gal (1185 L)
Freshwater Tank Capacity	24 gal (91 L)
Holding Tank Capacity	12 gal (45 L)

* Keel to Top - 135 in. (3.43 m), W/outriggers - 138 in. (3.51 m), W/18" radar - 139 in. (3.53 m)

DESIGNATED OCCUPANT SEATING

Be sure all passengers are properly seated in designated seating positions and not riding on the bow, bow pulpit, deck, gunwale or rear sun deck while underway. Passengers must use hand-holds and use caution when riding in the bow. Move to the aft passenger seats during rough water operation or if visibility is restricted.



● = Seat position

SFOX-0021

SAFETY DECALS



3 **WARNING**
Failure to follow these warnings could cause severe injury or death.

- WEAR SAFETY LANYARD at all times while operating boat to prevent unassisted boat operation.
- NEVER OPERATE WHILE UNDER THE INFLUENCE of drugs or alcohol.
- DO NOT OVERLOAD THE BOAT. ENSURE THAT WEIGHT IS PROPER AND EVENLY DISTRIBUTED fore and aft and on both sides of the boat to avoid poor handling sudden loss of control, swamping and/or capsizing.
- PASSENGERS SHOULD WEAR U.S. COAST GUARD APPROVED LIFE JACKETS.
- MAKE SURE THAT ALL PASSENGERS ARE PROPERLY SEATED WHILE UNDERWAY. To avoid passengers falling overboard or being ejected from the boat, do not allow passengers to sit on seat backs, gunwales or outboard deck edges while boat is moving.
- REDUCE SPEED BEFORE ATTEMPTING SUDDEN OR SHARP TURNS AND MAINTAIN SAFE SPEEDS for water conditions and environmental a times. Maneuverability at high speeds is limited, and sudden turns may result in loss of boat control.
- KEEP PROPER LOOKOUT AND SAFE DISTANCE for the conditions at all times to avoid collisions.
- OBEY APPLICABLE NAVIGATION RULES AND BOATING LAWS.
- USE CAUTION AND PROPER LIGHTING during nighttime boating and boating in adverse weather.
- READ THE OWNER'S MANUAL AND COMPLETE THE BOATER'S PRE-OPERATION CHECKLIST prior to boat operation.

U30020-01

3 **YACHT CERTIFICATION**
THIS BOAT COMPLIES WITH THE U.S. COAST GUARD SAFETY STANDARDS IN EFFECT ON THE DATE OF CERTIFICATION
SEA FOX BOAT COMPANY
MONCK'S CORNER, S.C.



3 **WARNING**
Operating, servicing and maintaining a recreational marine vessel can expose you to chemicals including engine exhaust, carbon monoxide, phthalates, and lead, which are known to the State of California to cause cancer and birth defects or other reproductive harm. To minimize exposure, avoid breathing exhaust, service your vessel in a well-ventilated area and wear gloves or wash your hands frequently when servicing this vessel. For more information go to www.P65warnings.ca.gov/marine.

U30043-01

9 **DANGER**
Carbon monoxide (CO) can cause brain damage or death.
Engine and generator exhaust contains odorless and colorless carbon monoxide gas.
Carbon monoxide will be around the back of the boat when engines or generators are running.
Move to fresh air, if you feel nausea, headache, dizziness, or drowsiness.

U30059-01

3 **WARNING**
CARBON MONOXIDE (CO) CAN CAUSE BRAIN DAMAGE OR DEATH.
-Carbon monoxide can be present in the cabin.
-Signs of carbon monoxide poisoning include nausea, headache, dizziness, drowsiness, and lack of consciousness.
MOVE TO FRESH AIR if anyone shows signs of carbon monoxide poisoning.
USE AVAILABLE HANDRAILS AND HANDHOLDS while moving about the cabin and while the boat is in motion to avoid falling.

U30419-01

3 **WARNING**
Failure to follow these warnings could cause **SERIOUS INJURY OR DEATH.**

- REMAIN PROPERLY SEATED AND HOLD ON to available handrails while boat is moving to avoid falling overboard or being ejected from the boat. Do not sit on seat backs, gunwales or outboard deck edges.
- WEAR U.S. COAST GUARD APPROVED LIFE JACKETS.
- DO NOT OVERLOAD THE BOAT. OCCUPANTS AND GEAR MUST BE PROPERLY AND EVENLY DISTRIBUTED fore and aft, and on both sides of the boat. Improper loading and/or overloading may result in poor handling, sudden loss of control, swamping and/or capsizing.
- REFER TO AND OBEY THE DESIGNATED OCCUPANT SEATING POSITIONS that are indicated by the manufacturer for your specific model.
- OBEY THE OPERATOR at all times.
- DO NOT RESTRICT THE OPERATOR'S VISION.
- DO NOT DEPART THE VESSEL without informing the operator.

U30020-01

5 **DANGER**
ROTATING PROPELLER CAN CAUSE SERIOUS INJURY OR DEATH. SHUT OFF MOTOR WHEN NEAR PERSONS IN WATER.

U30020-01

1 **WARNING**
Failure to follow these warnings could cause **SERIOUS INJURY OR DEATH.**

- REMAIN PROPERLY SEATED AND HOLD ON to available handrails while boat is moving to avoid falling overboard or being ejected from the boat. Do not sit on seat backs, gunwales or outboard deck edges.
- WEAR U.S. COAST GUARD APPROVED LIFE JACKETS.
- DO NOT OVERLOAD THE BOAT. OCCUPANTS AND GEAR MUST BE PROPERLY AND EVENLY DISTRIBUTED fore and aft, and on both sides of the boat. Improper loading and/or overloading may result in poor handling, sudden loss of control, swamping and/or capsizing.
- REFER TO AND OBEY THE DESIGNATED OCCUPANT SEATING POSITIONS that are indicated by the manufacturer for your specific model.
- OBEY THE OPERATOR at all times.
- DO NOT RESTRICT THE OPERATOR'S VISION.
- DO NOT DEPART THE VESSEL without informing the operator.

U30020-01

3 **AIR CONDITIONER**
U30086-01

1 **WARNING**
Moving parts can crush and cut. Keep hands clear while operating bracket.

U30070-01

9 **NO WOOD! NO ROT!**

U30020-01

3 **BATTERY CHARGER**

U30071-01

7 **WARNING**
Leaking fuel is a fire and explosion hazard.
Avoid serious injury or death from fire or explosion from leaking fuel. Inspect system for leaks at least once a year.

U30020-01

2 **DISCHARGE OF OIL PROHIBITED**
THE FEDERAL WATER POLLUTION CONTROL ACT PROHIBITS THE DISCHARGE OF OIL OR OILY WASTE INTO OR UPON THE NAVIGABLE WATERS OF THE UNITED STATES, OR THE WATERS OF THE CONTIGUOUS ZONE, OR WHICH MAY AFFECT NATURAL RESOURCES BELONGING TO, APPERTAINING TO, OR UNDER THE EXCLUSIVE MANAGEMENT AUTHORITY OF THE UNITED STATES, IF SUCH DISCHARGE CAUSES A FILM OR DISCOLORATION OF THE SURFACE OF THE WATER OR CAUSES A SLUDGE OR EMULSION BENEATH THE SURFACE OF THE WATER. VIOLATORS ARE SUBJECT TO SUBSTANTIAL CIVIL PENALTIES AND/OR CRIMINAL SANCTIONS INCLUDING FINES AND IMPRISONMENT.

2 **NON POTABLE WATER**

U30071-01

4 **RAW WATER**

U30020-01

4 **FRESH WATER**

U30020-01

5 **WARNING**
CONTENTS CAN BE UNDER PRESSURE. AVOID SERIOUS INJURY OR DEATH FROM FIRE OR EXPLOSION. OPEN SLOWLY IN WELL VENTILATED AREA. NO SMOKING OR OPEN FLAMES.

U30020-01

8 **WARNING**
AVOID PERSONAL INJURY
Ladder person capacity not to exceed 400 lbs. Insure ladder is secure to mount before use. Keep hands and feet clear of moving parts while stowing and deploying.

U30020-01

2 **NOTICE**
THIS BOAT IS EQUIPPED WITH AN OPTIONAL DIRECT OVERBOARD DISCHARGE VALVE. DISCHARGING OF SEWAGE DIRECTLY OVERBOARD IS FOR USE WHERE APPROVED ONLY.

U30020-01

6 **WARNING**
Rotating propeller may cause serious injury or death. Shut off engine when near persons in the water.

U30020-01

2 **WARNING**
Carbon monoxide (CO) can cause brain damage or death. Engine and generator exhaust contains odorless and colorless carbon monoxide gas. Signs of carbon monoxide poisoning include nausea, headache, dizziness, drowsiness, and lack of consciousness. Get fresh air if anyone shows signs of carbon monoxide poisoning. See Owner's Manual for information regarding carbon monoxide poisoning.
Leaking fuel is a fire and explosion hazard. Avoid serious injury or death from fire or explosion from leaking fuel. Inspect system for leaks at least once a year.

U30074-01

2 **NOTICE**
SHUT OFF VALVE(S) LOCATED BEHIND ACCESS PANEL. CLOSE VALVE(S) WHEN NOT IN USE.

U30020-01

8 **WARNING**
PINCH POINT
Watch your hands and fingers when opening and closing cover.
AVOID PERSONAL INJURY. SECURE GATE/DOOR WHEN BOAT IS UNDERWAY. ENSURE LADDER IS SECURED TO DECK PRIOR TO USING IF EQUIPPED.

U30075-01

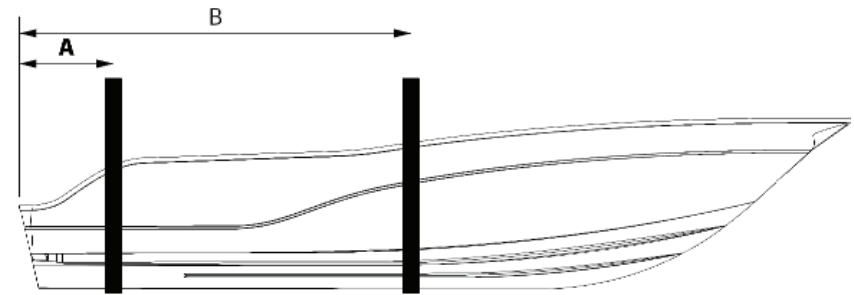
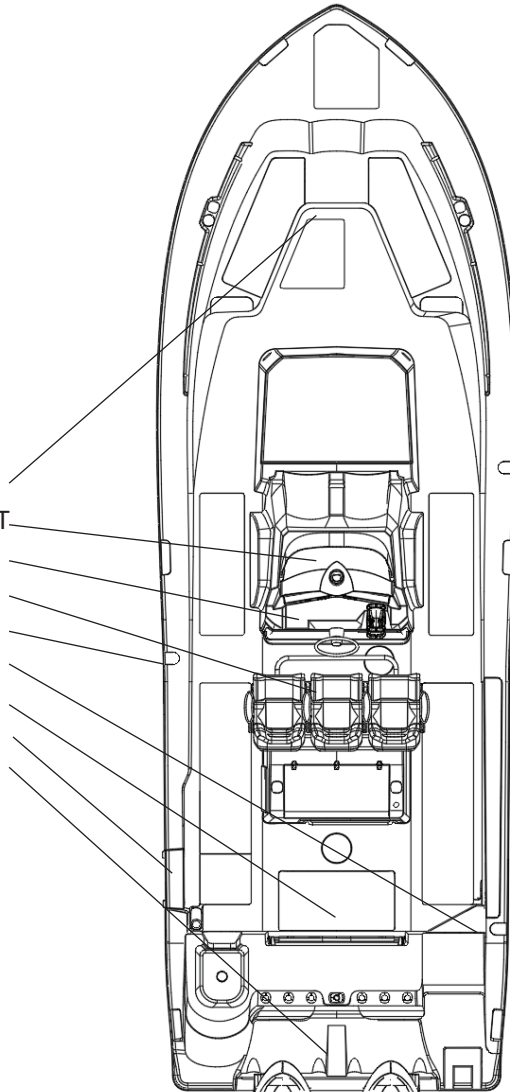
2 **NOTICE**
SEA FOX BOAT COMPANY
MEETS U.S. EPA EAP STANDARDS USING CERTIFIED COMPONENTS

2 **It is illegal for any vessel to dump plastic ANYWHERE in the ocean or navigable waters of the United States. Annex V of MARPOL TREATY is an International Law for a cleaner, safer marine environment. Violation of these requirements is a Class D Felony and may result in a civil penalty, up to \$25,000 fine and imprisonment.**

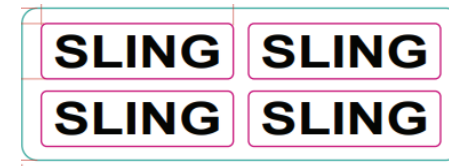
U.S. lakes, rivers, bays or sounds and 3 miles from shore	3 to 12 miles	12 to 25 miles	Outside 25 miles
ILLEGAL TO DUMP: Plastic and Garbage Paper Metal Rags Crockery Glass Dunnage Food	ILLEGAL TO DUMP: Plastic Dunnage, lining and packing materials that float; also if not ground to less than one inch Paper Crockery Rags Metal Glass Food	ILLEGAL TO DUMP: Plastic Dunnage, lining and packing materials that float.	ILLEGAL TO DUMP: Plastic

Regional state and local regulations may further restrict the disposal of garbage. The discharge of all garbage into the Great Lakes or their connecting or tributary waters is prohibited.

- 1= COCKPIT FRONT
- 2= HEAD COMPARTMENT
- 3= CONSOLE HELM
- 4= LEAN POST POD
- 5= FUEL FILL
- 6= TRANSOM GATE
- 7= COCKPIT AFT
- 8= DIVE DOOR
- 9= TRANSOM

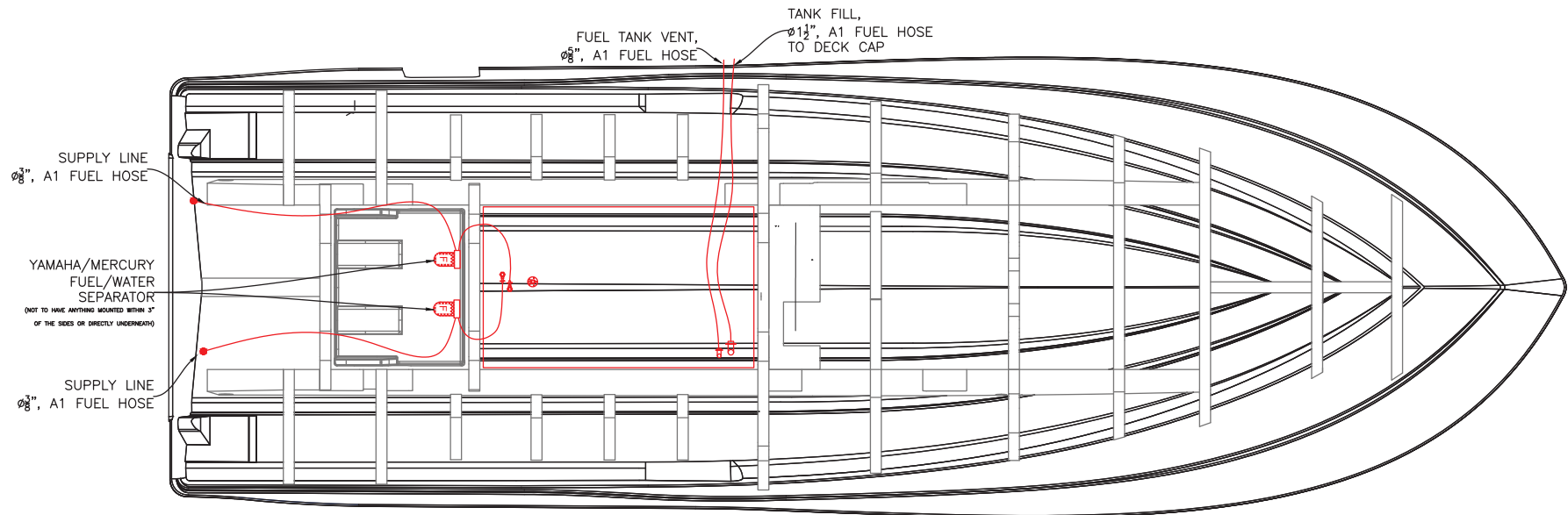
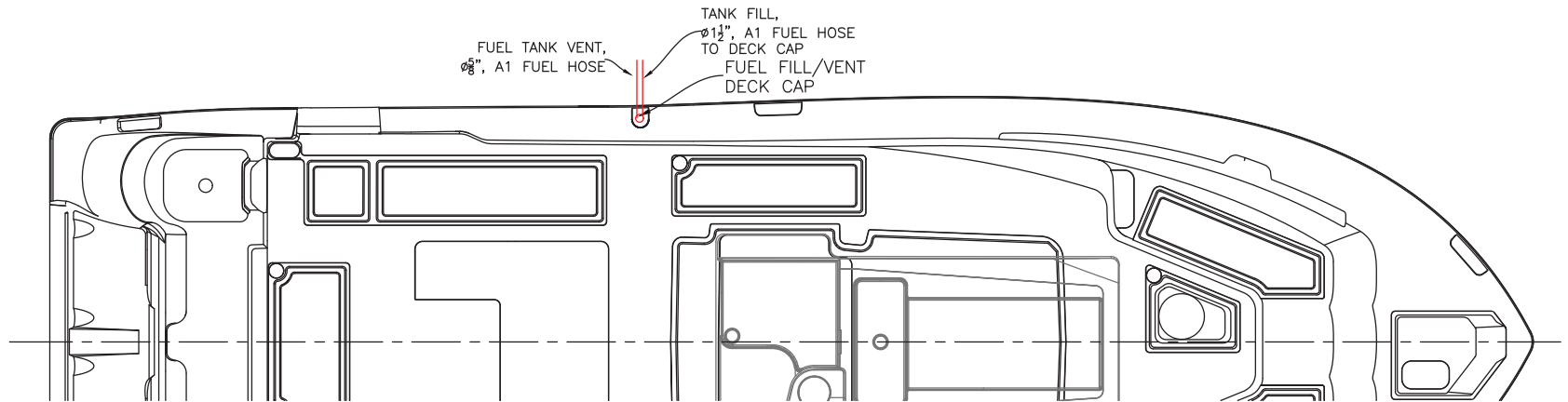


A- AFT SLING LOCATION PORT AND STARBOARD
(38")
B- FORWARD SLING LOCATION PORT AND STARBOARD
(225")

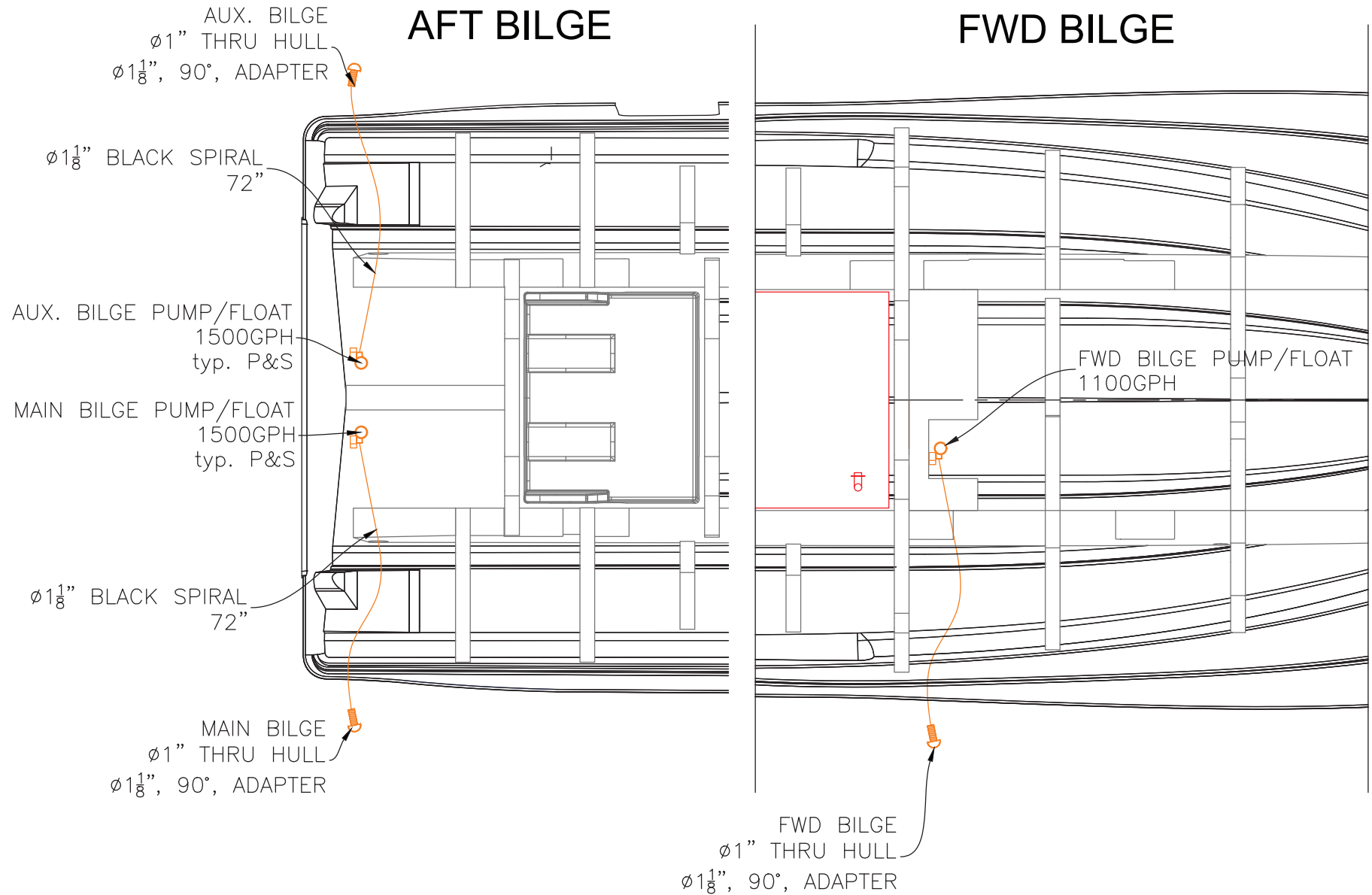


PLUMBING SCHEMATICS

FUEL SYSTEM

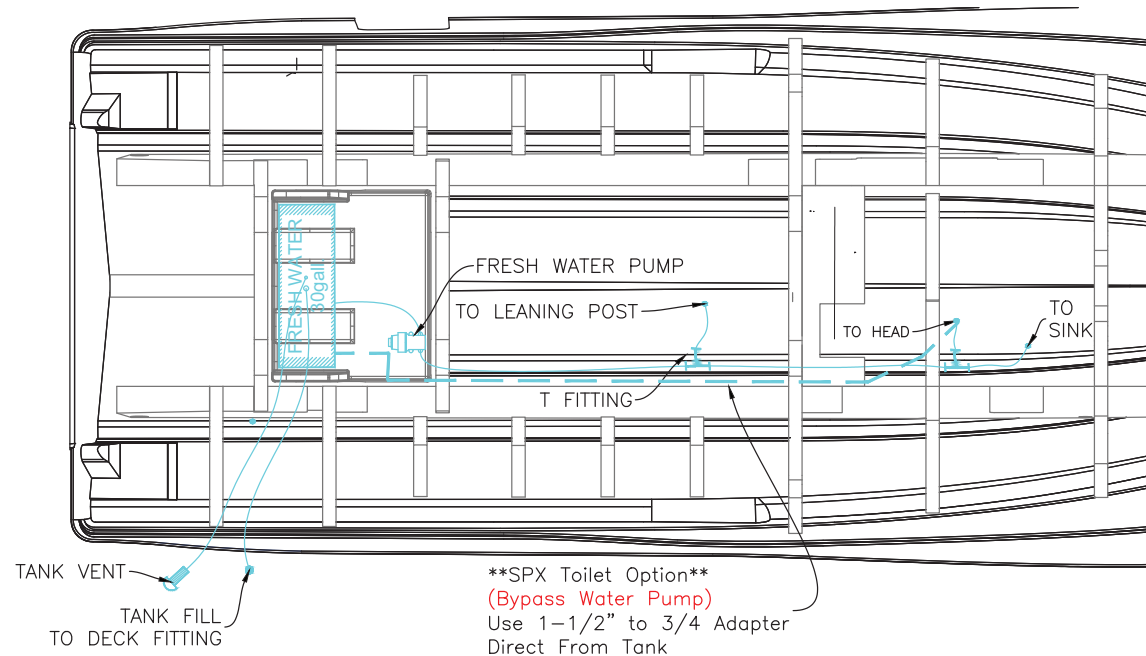
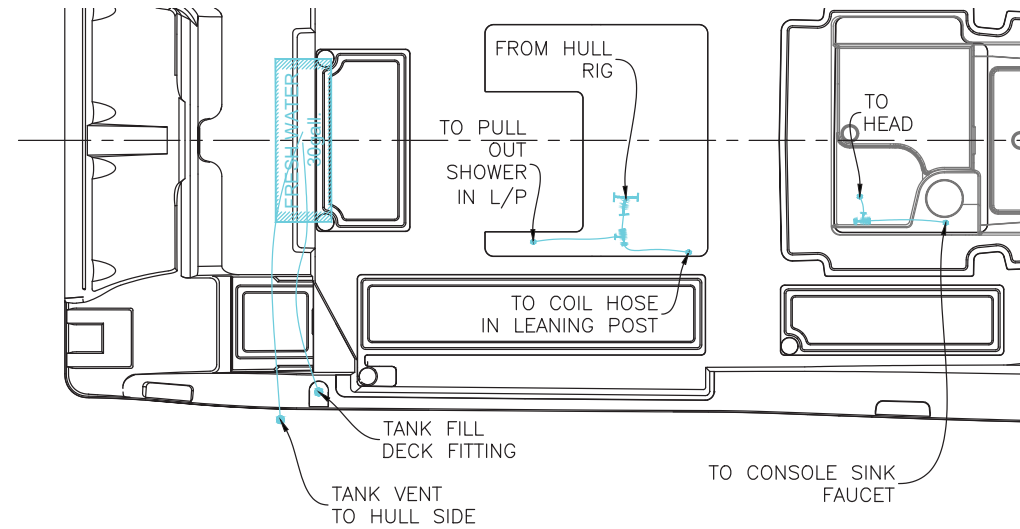


BILGE SYSTEM



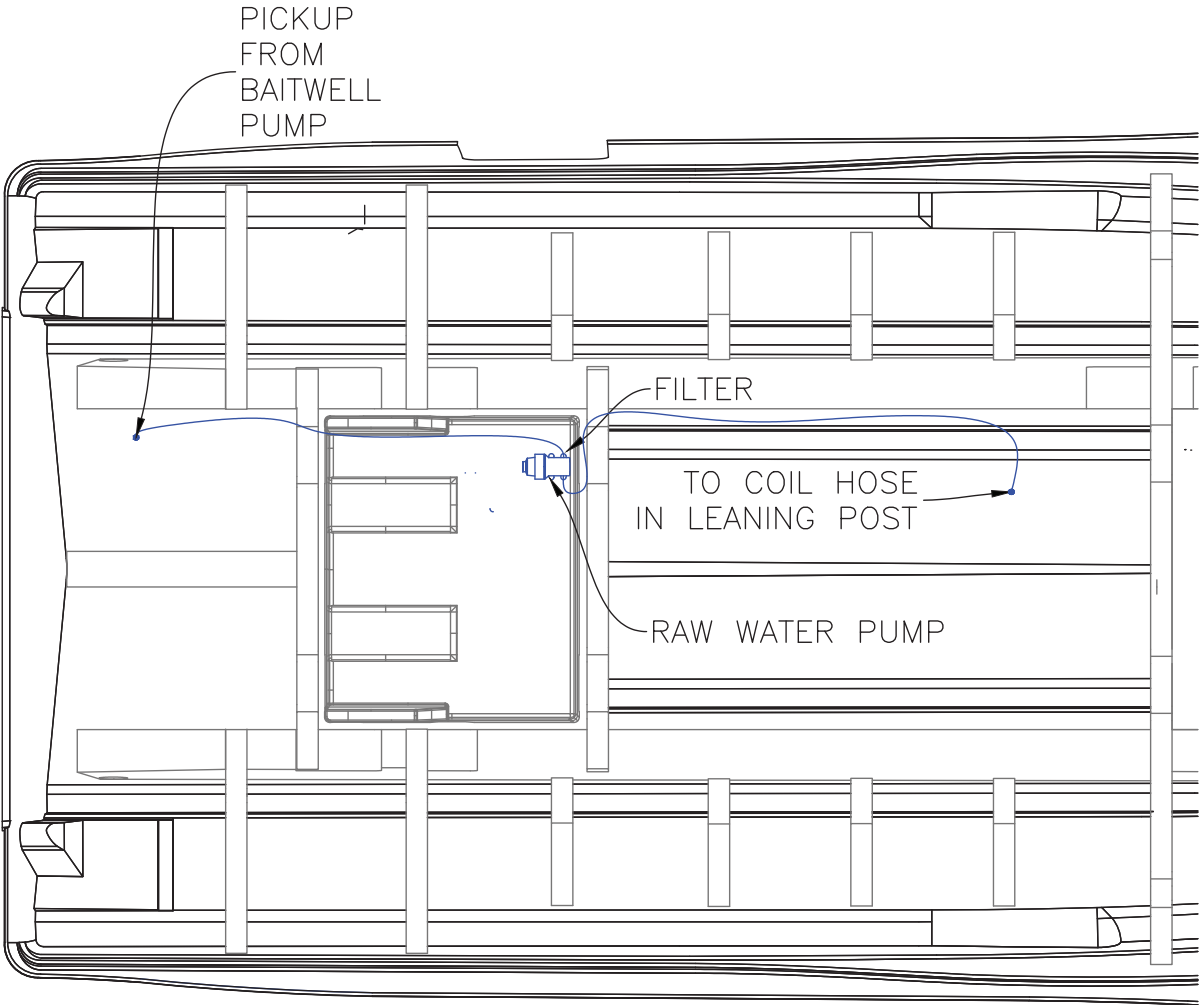

FRESH WATER SYSTEM

FRESH WATER

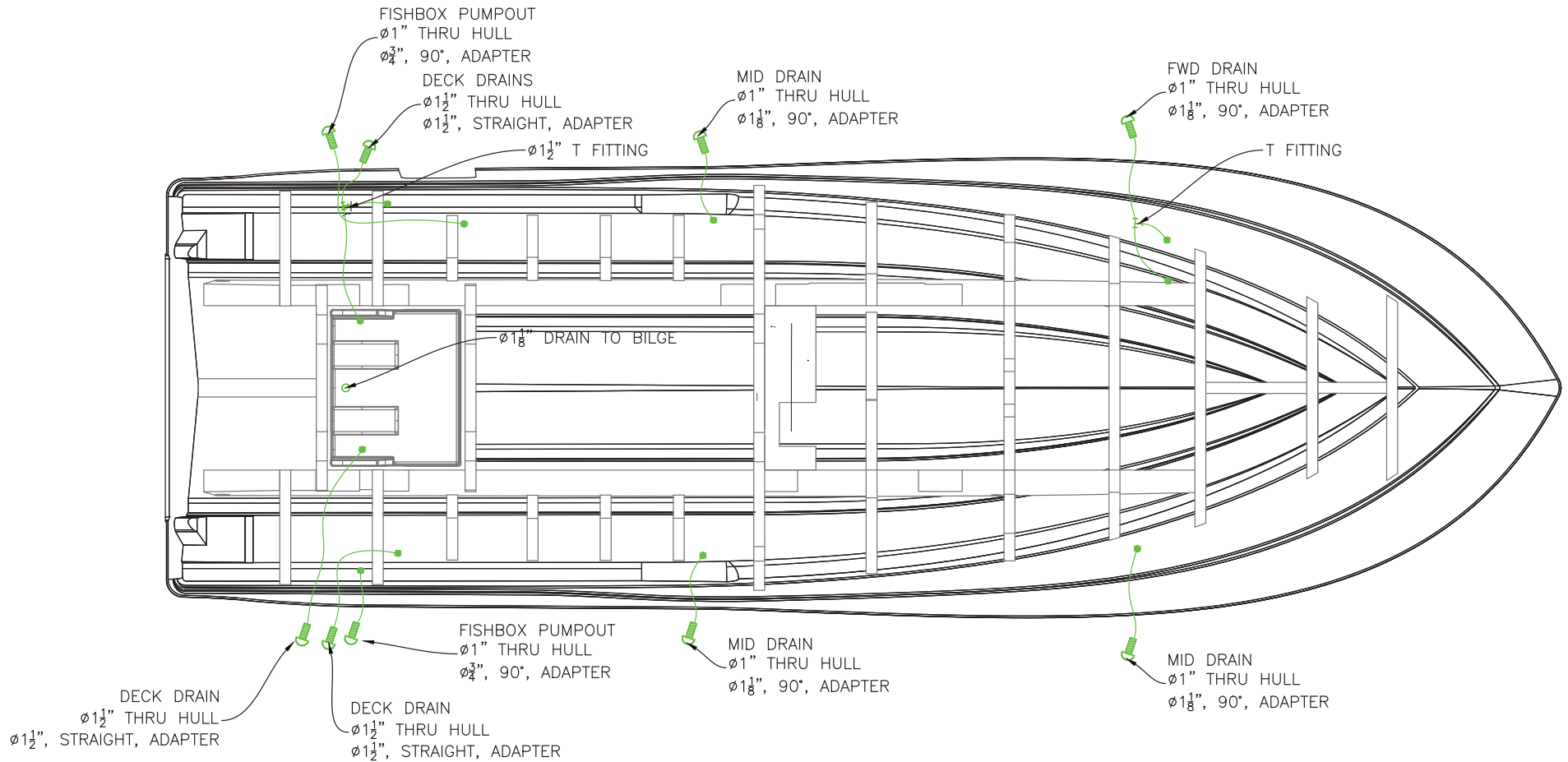


RAW WATER SYSTEM

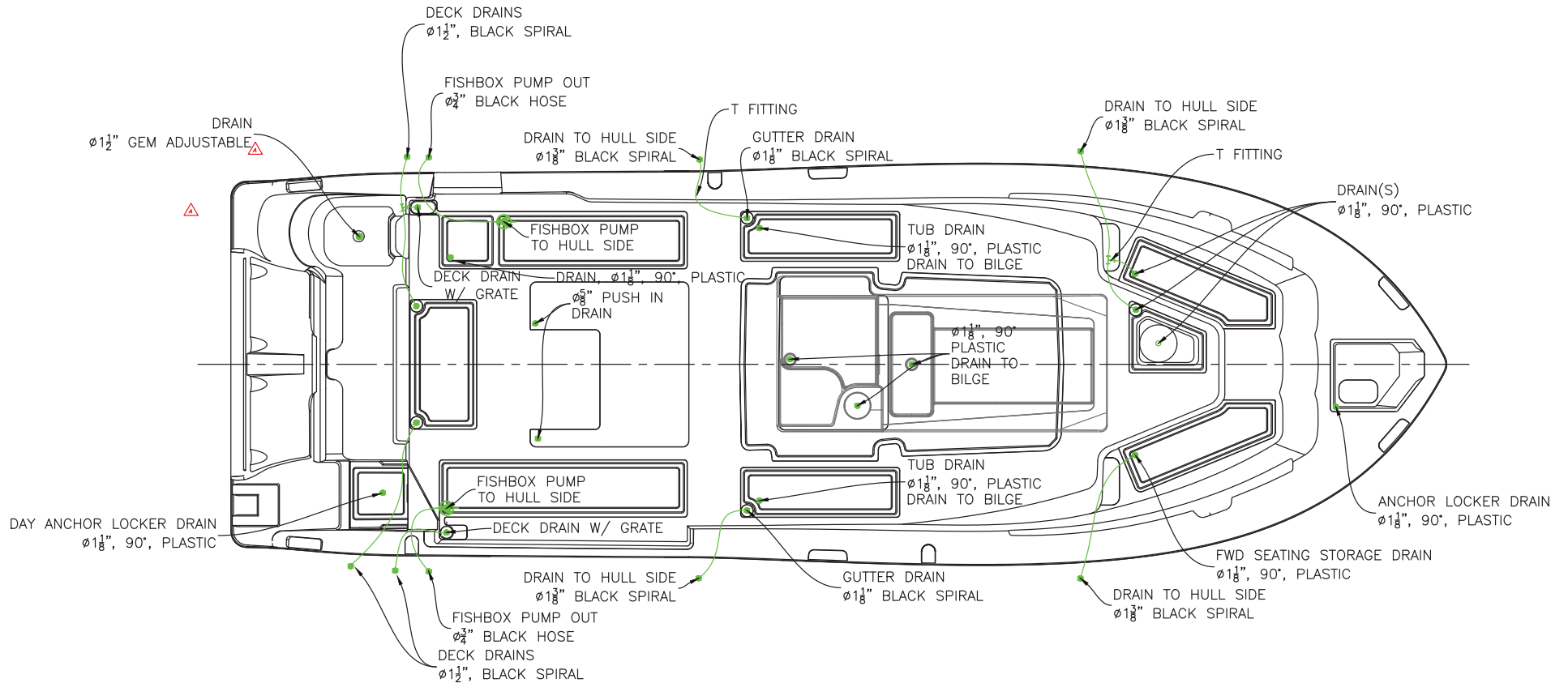
RAW WATER



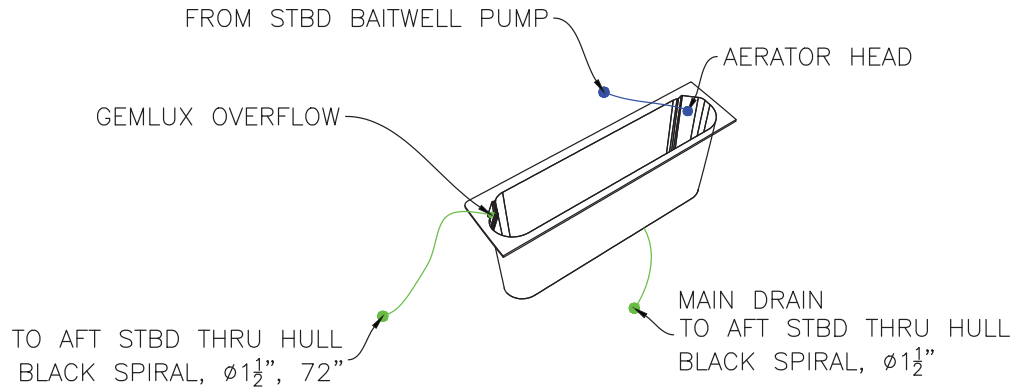
DRAINS



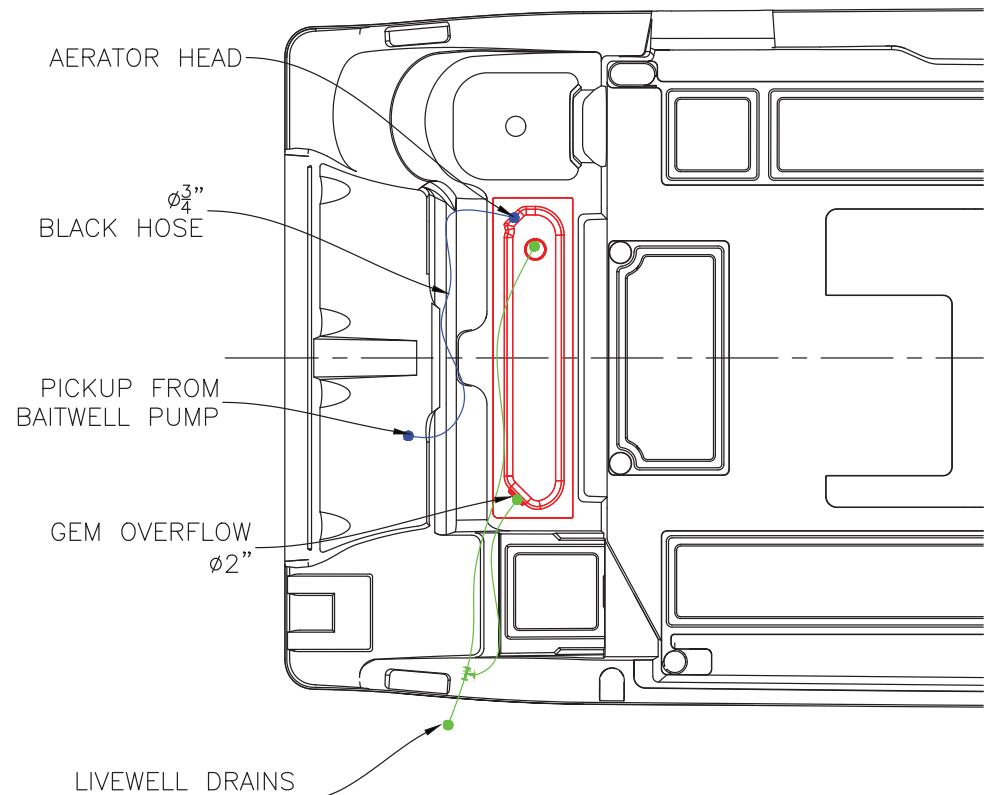
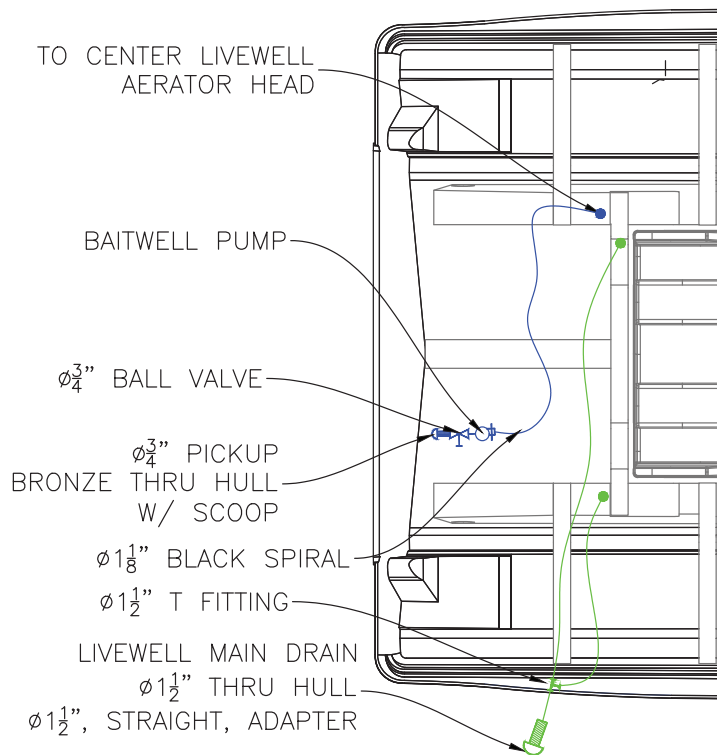
DRAINS (CONTINUED)



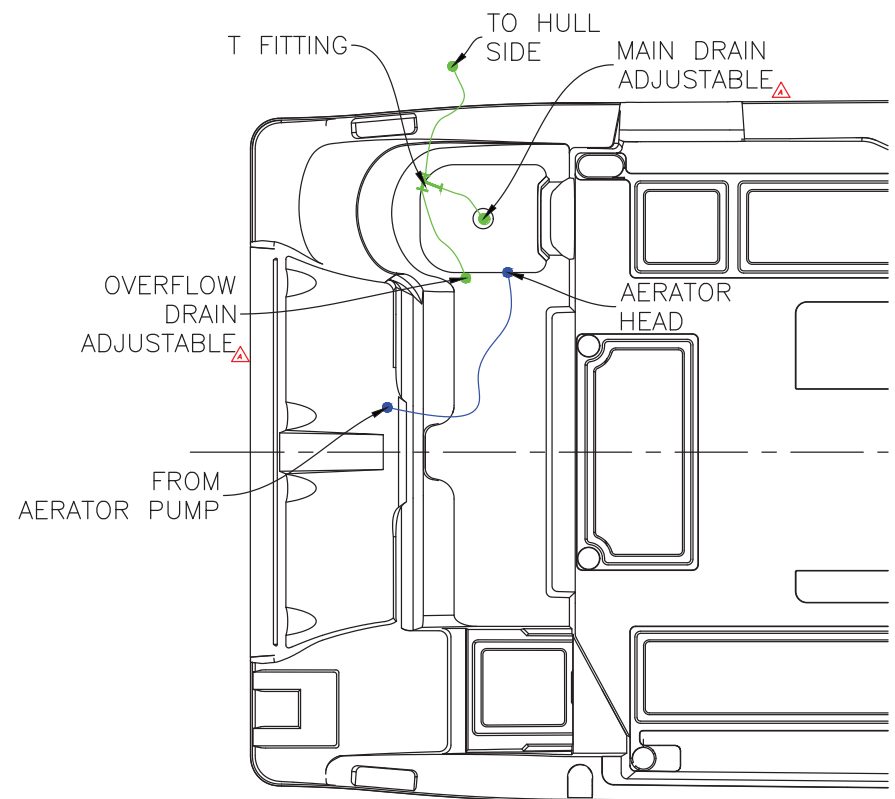
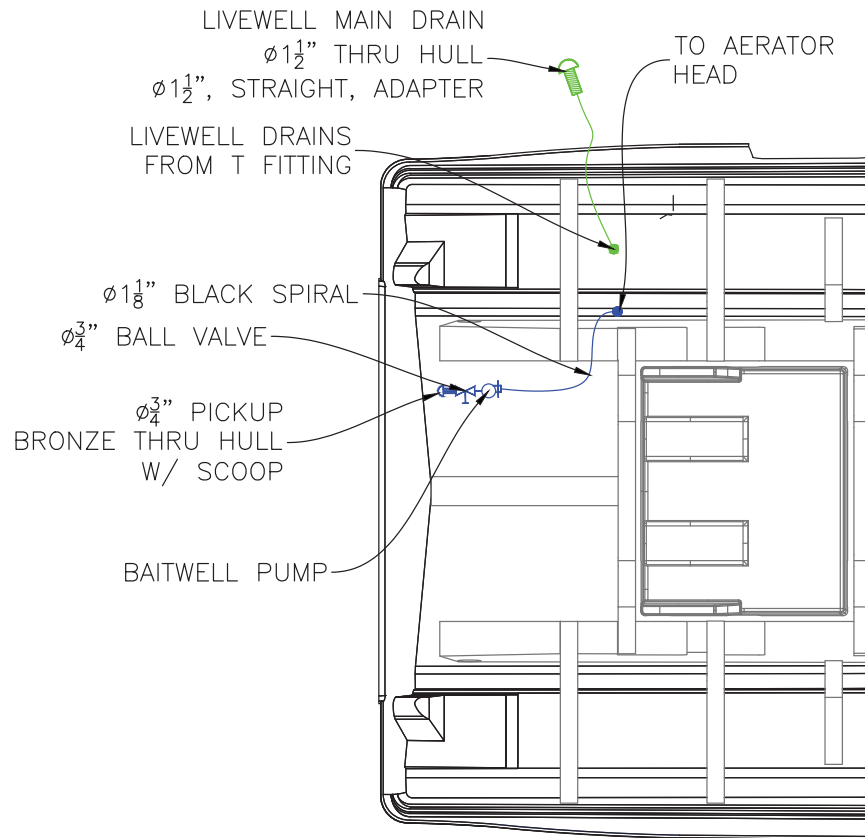
LIVEWELL (PRESSURIZED)



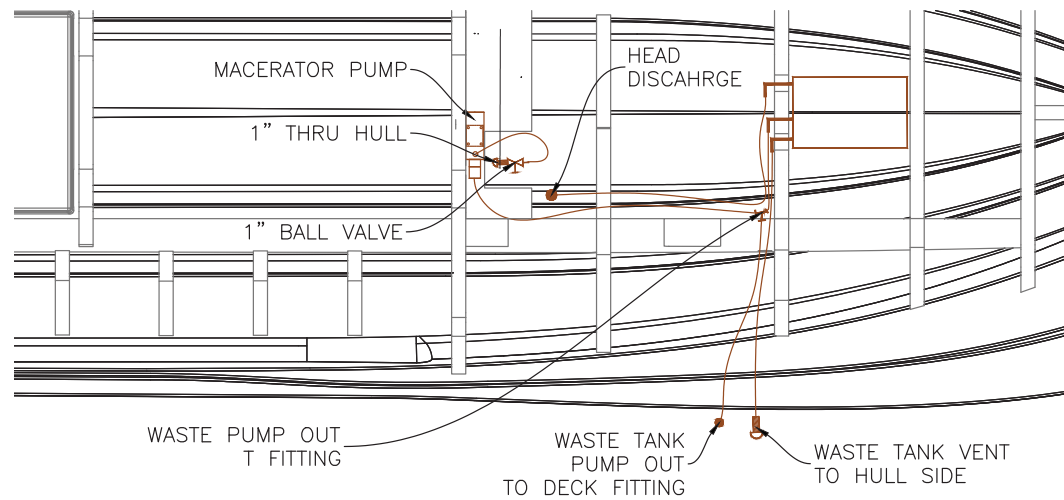
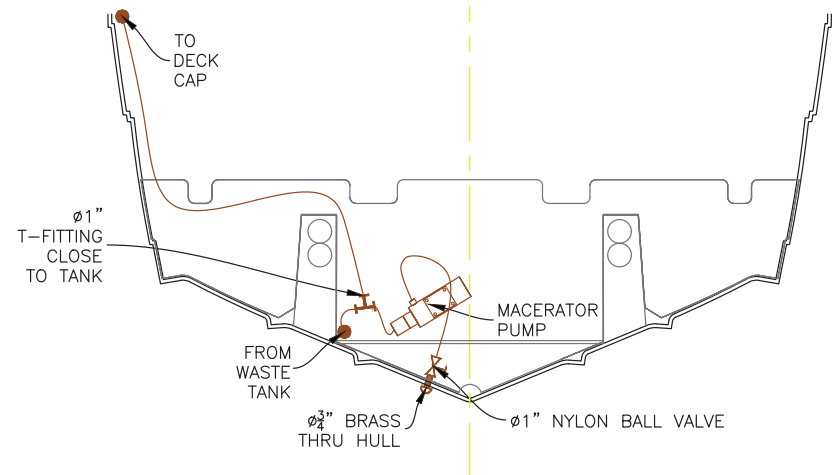
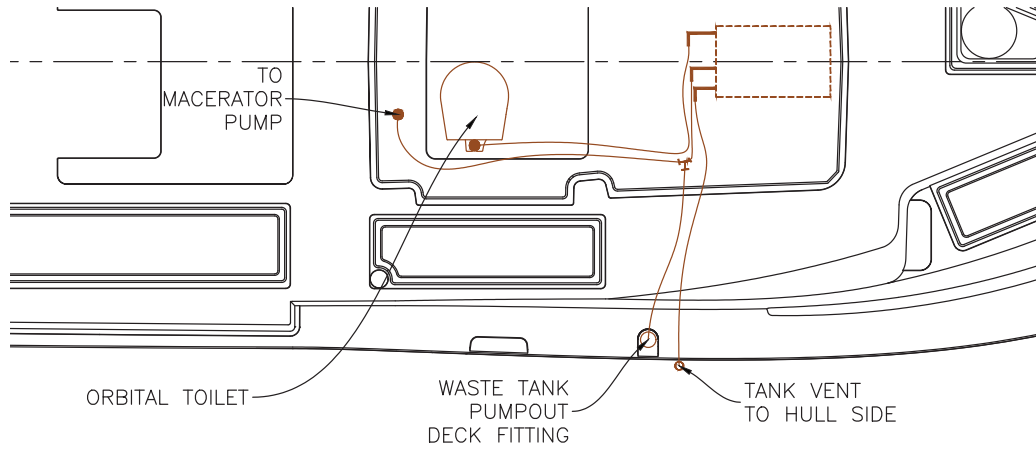
****PRESSURIZED LIVEWELL****



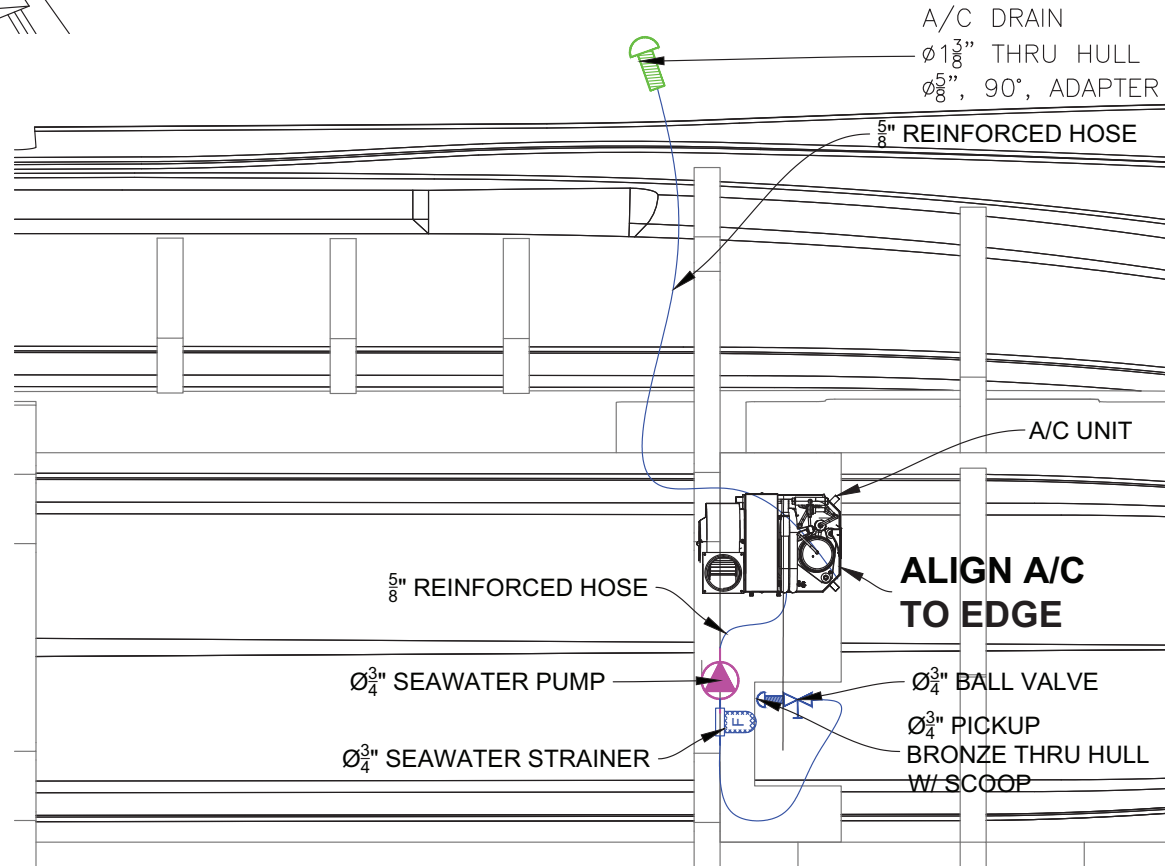
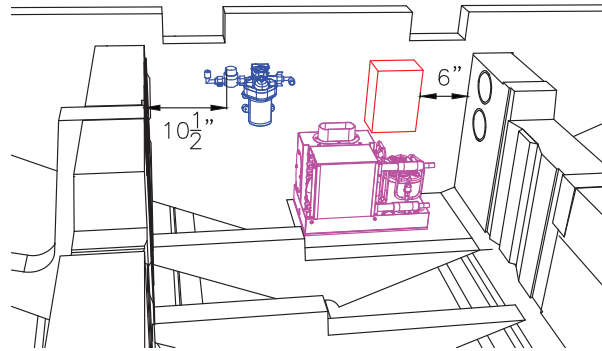
LIVEWELL (AQUARIUM)



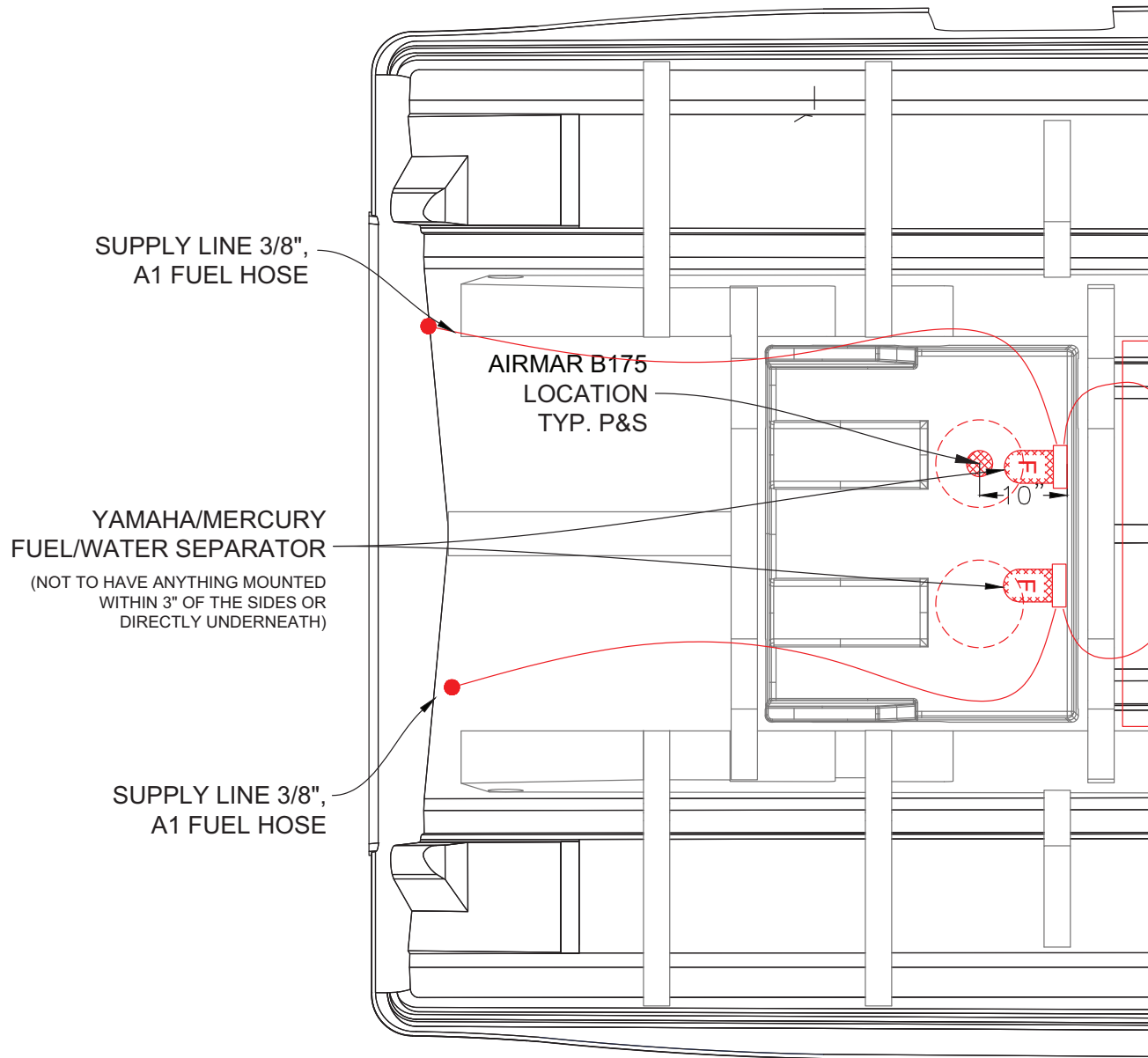
WASTE SYSTEM



AIR CONDITIONING

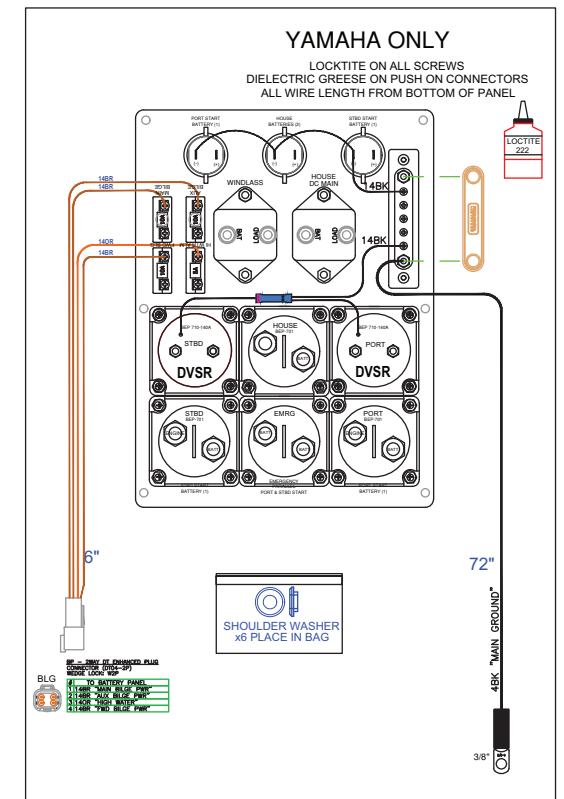
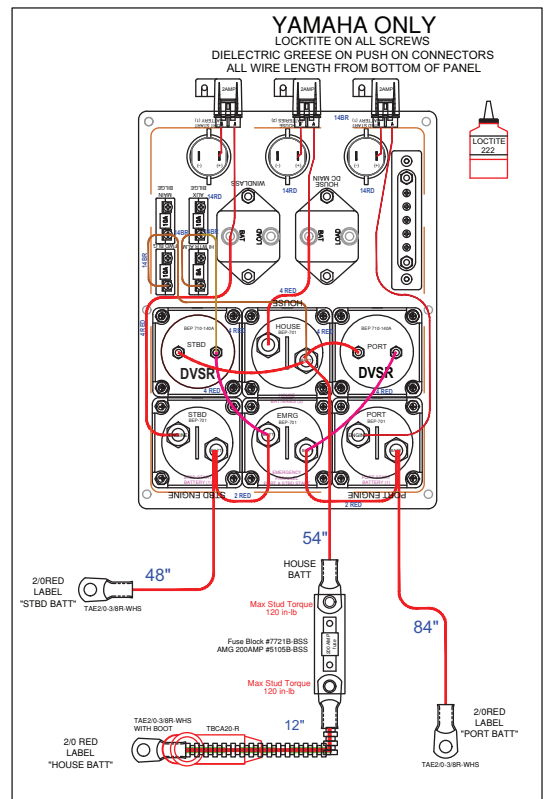
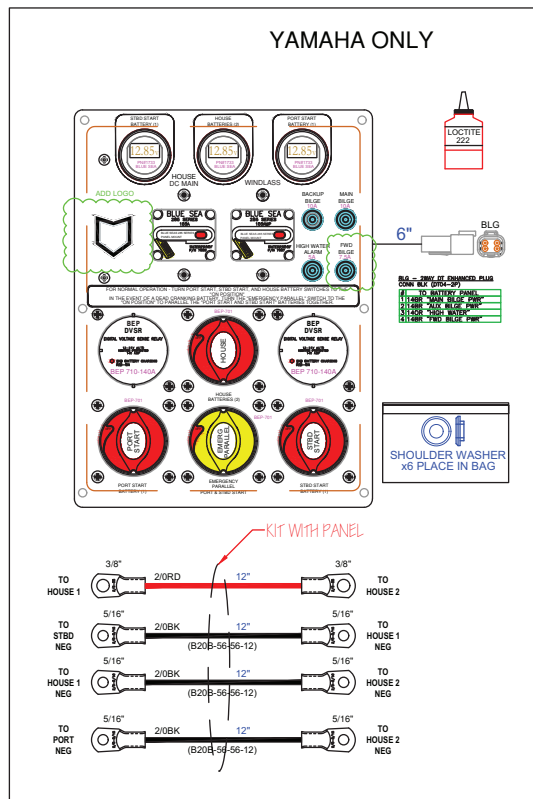


B150 TRANSDUCER

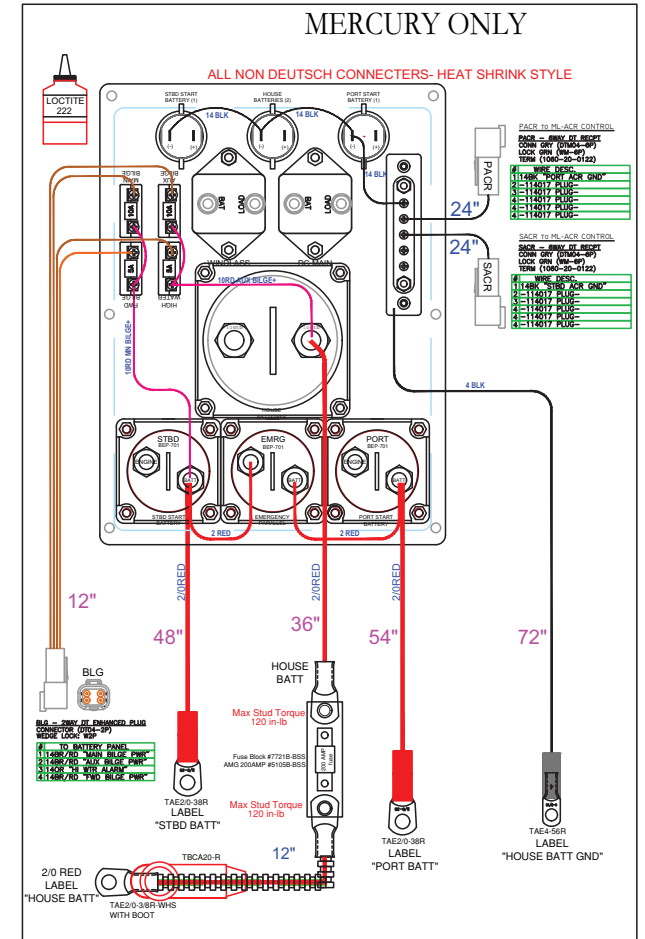
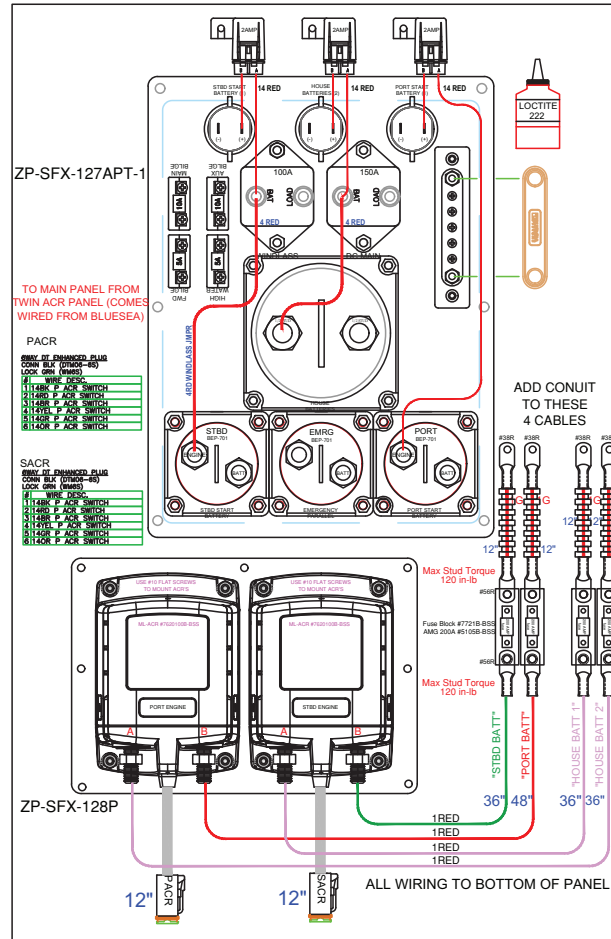
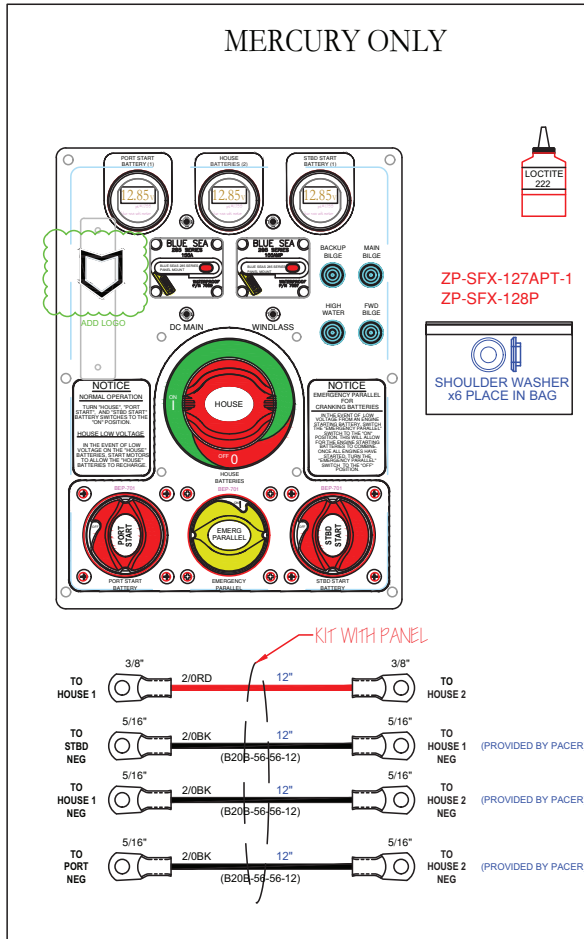


ELECTRICAL SCHEMATICS

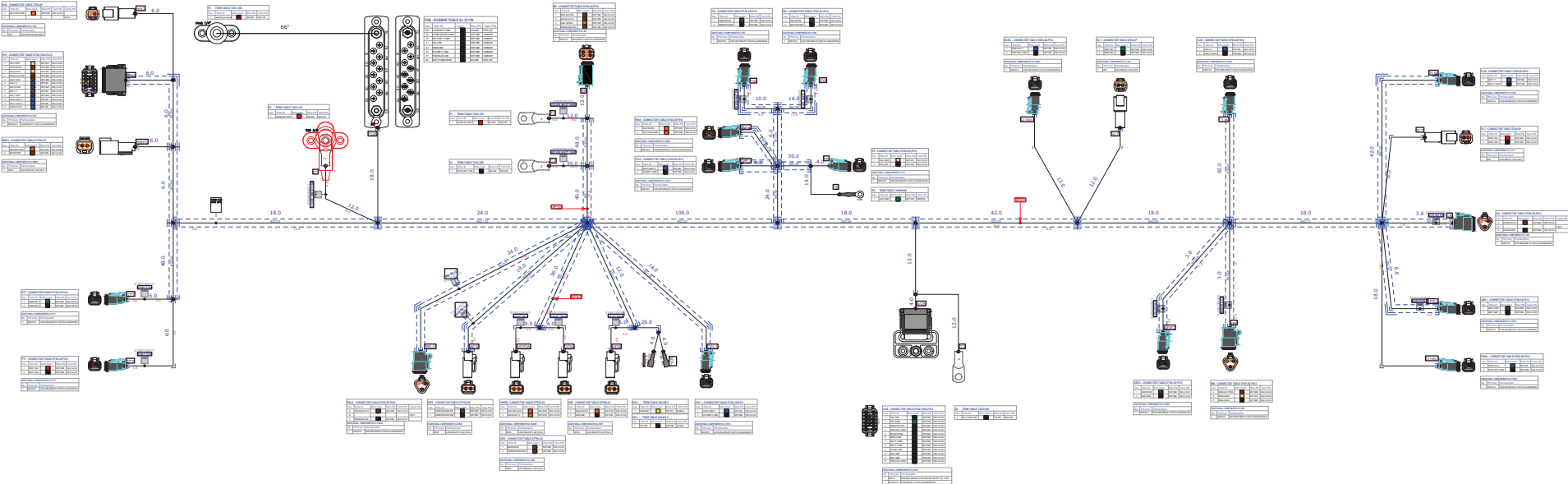
12V BATTERY SWITCH PANEL



12V BATTERY SWITCH PANEL (CONTINUED)



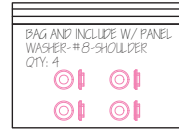
HULL HARNESS



SWITCH PANEL

PANEL: ZP-SFX-108APT
 INSERT: ZP-SFX-109PLE
 BACKER: ZP-SFX-110APC

NAV LIGHTS SPLICES TO
 -BACKLIGHT (HARDTOP PANEL)
 -BOW/NAV LT
 -PANEL BACK LIGHT
 -COMPASS LIGHT



HH2 - 2WAY DT ENHANCED PLUG
 CONN BLK (DT06-2S-P012)
 LOCK GRN (W2S-P012)
 TERM (1062-14-0122)

#	WIRE DESC.
1	1140R "396A HI WTR ALRM"
2	PLUG



HH1 - 12WAY DT RECPT GRAY
 CONN (DT04-12PA)
 LOCK (W12P)
 TERM (1060-14-0122)

#	WIRE DESC.
1	14PK #215 FUEL SNDR
2	14BR #122 FRESHWATER LD
3	14TN #114 BILGE MAN
4	14BR #113 IN MN BLG AUTO
5	14BR #173 AER 2 PMP
6	14BL #155 AER 2 LT
7	14BR #125 RAW WATER LD
8	14BL #152 AER 1 LT
9	14BR #170 AER 1 PMP
10	14BL #322 COMP LT HEAD
11	14BL #320 COMP LT/MACH
12	14BL #131 U/W LTS

HWA-WAY DEUTSCH DIODE
 CONN - DT04-2P-R01
 CONN - DT06-2S-P012
 LOCK - W2S-P012

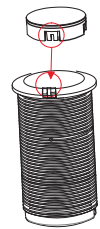
#	WIRE DESCRIPTION
1	1140R/RO "396B H/W ALARM"
2	1140R "396A HI WTR ALRM"



NOTES:

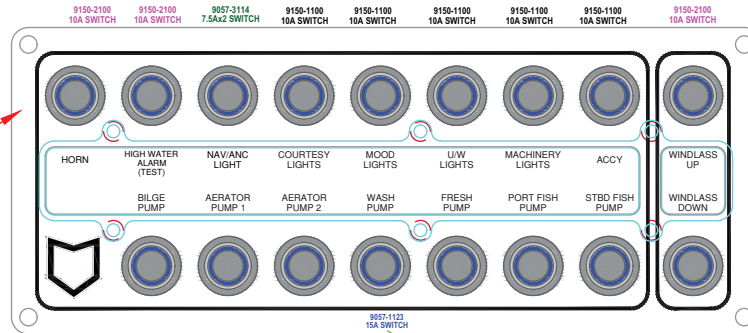
1. MAKE SURE LIGHTS ARE CORRECTLY TAPE TO THE BACK OF PANEL
2. PANEL HAS RUBBER GASKET ON BACK
3. ADD CONDUIT TO GREEN DASHED LINES
4. PANEL IS GLOSS BLACK, BLUE BACKLT

ADD WEATHER STRIP TO BACK OF PANEL

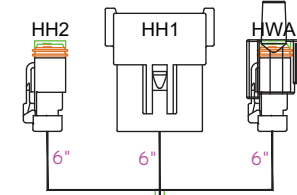


ACTUATOR NOTE:
 ALIGNED ACTUATOR KEY TO SWITCH KEY AND PRESS FIRMLY

TAE4-14R WHS 8"
 4BK "#4 HELM MAIN GND"



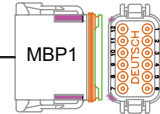
TO HULL HARNESS



MBP1 - 12WAY DT PLUG KEY "A"
 CONN GRY (DT06-12SA-P012)
 LOCK GRN (W12S-P012)
 TERM (1062-14-0122)

#	WIRE DESC.
1	1140R #100 HORN LN
2	1140R #103 NAV/ANC LTS LN
3	1140R #220 COURT LTS LN
4	1140R #310 MOOD LTS LN
5	1140R #130 U/W LTS LN
6	1140R #319 MACH LTS LN
7	1140R #169 AER #1 LN
8	1140R #172 AER #2 LN
9	1140R #135 P. FISHBX LN
10	1140R #138 S. FISHBOX LN
11	1140R #121 FRESHWATER LN
12	1140R #124 RAW WATER LN

FROM BREAKER PANEL



FROM BREAKER PANEL



MBP3 - 2WAY DT ENHANCED PLUG
 CONN BLK (DT06-2S-P012)
 LOCK GRN (W2S-P012)
 TERM (1062-14-0122)

#	WIRE DESC.
1	1140R #444 ACCY SWITCH
2	114BL #230 CABIN LT

CL1 - 2WAY DT ENHANCED PLUG
 CONN BLK (DT06-2S-P012)
 LOCK GRN (W2S-P012)
 TERM (1062-14-0122)

#	WIRE DESC.
1	114BL #221 COURT LT #1
2	114BK #222 COURT LT #1 GND

CL2 - 2WAY DT ENHANCED PLUG
 CONN BLK (DT06-2S-P012)
 LOCK GRN (W2S-P012)
 TERM (1062-14-0122)

#	WIRE DESC.
1	114BL #223 COURT LT #2
2	114BK #224 COURT LT #2 GND

CBL - 2WAY DT ENHANCED PLUG
 CONN BLK (DT06-2S-P012)
 LOCK GRN (W2S-P012)
 TERM (1062-14-0122)

#	WIRE DESC.
1	114BL #230 CABIN LT
2	114BK #231 CABIN LT GND

CPL - 2WAY DT ENHANCED PLUG
 CONN BLK (DT06-2S-P012)
 LOCK GRN (W2S-P012)
 TERM (1062-14-0122)

#	WIRE DESC.
1	116BL #298 COMPASS LT
2	116BK #299 COMPASS LT GND



PDH - TO P DECK HARN

PDH - 4WAY DT ENHANCED PLUG
 CONN BLK (DT06-4S-P012)
 LOCK GRN (W4S-P012)
 TERM (1062-14-0122)

#	WIRE DESC.
1	114RD/WH #311 P. MOOD LTS
2	114YL/BL #312 P. MOOD LTS GND
3	114BR #136 P. FISHBOX
4	114BK #137 P. FISHBOX GND

NEW-2023MY HARDTOPS

HT2 - 2WAY DT ENHANCED PLUG
 CONN BLK (DT06-2S-P012)
 LOCK GRN (W2S-P012)
 TERM (1062-14-0122)

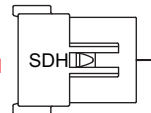
#	WIRE DESC.
1	114GY #109B ANC LT
2	1140R #100B HORN

OLD-2018-22MY HARDTOPS

HT1 - 4WAY DT RECPT
 CONN GRY (DT04-4P)
 LOCK GRN (W4P)
 TERM (1060-14-0122)

#	WIRE DESC.
1	1144017 PLUG-
2	114GY #109A ANC LT
3	1140R #100A HORN
4	116GY #306 BACKLIGHT HTOP NAV SPLICE

TO S DECK HARN

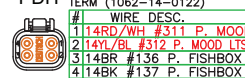


TO HARDTOP

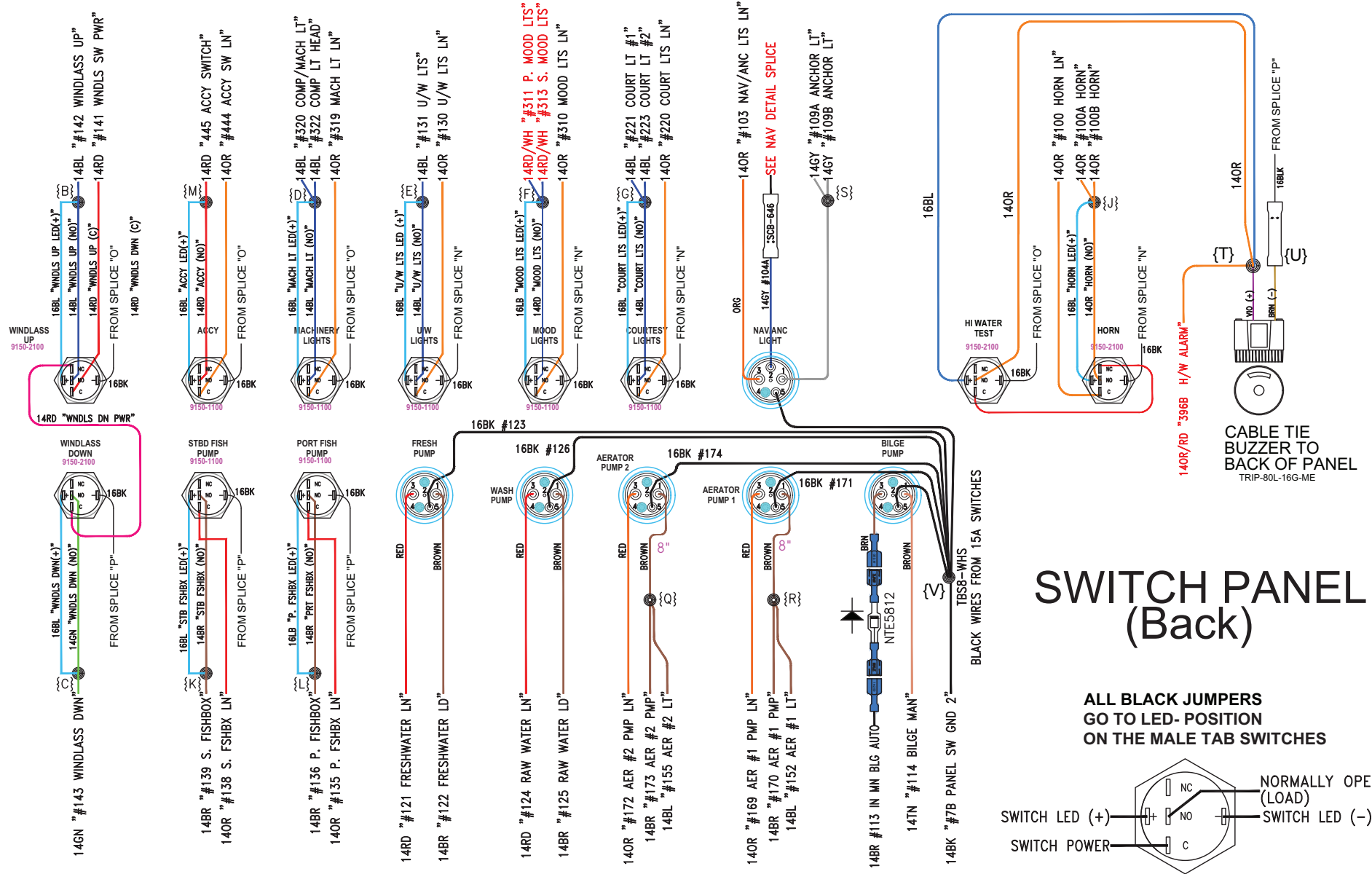
STB LEG HARNESS



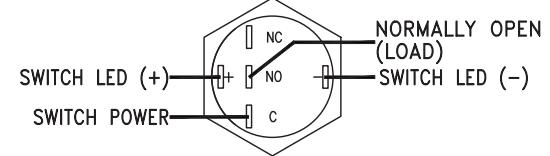
PDH - TO P DECK HARN



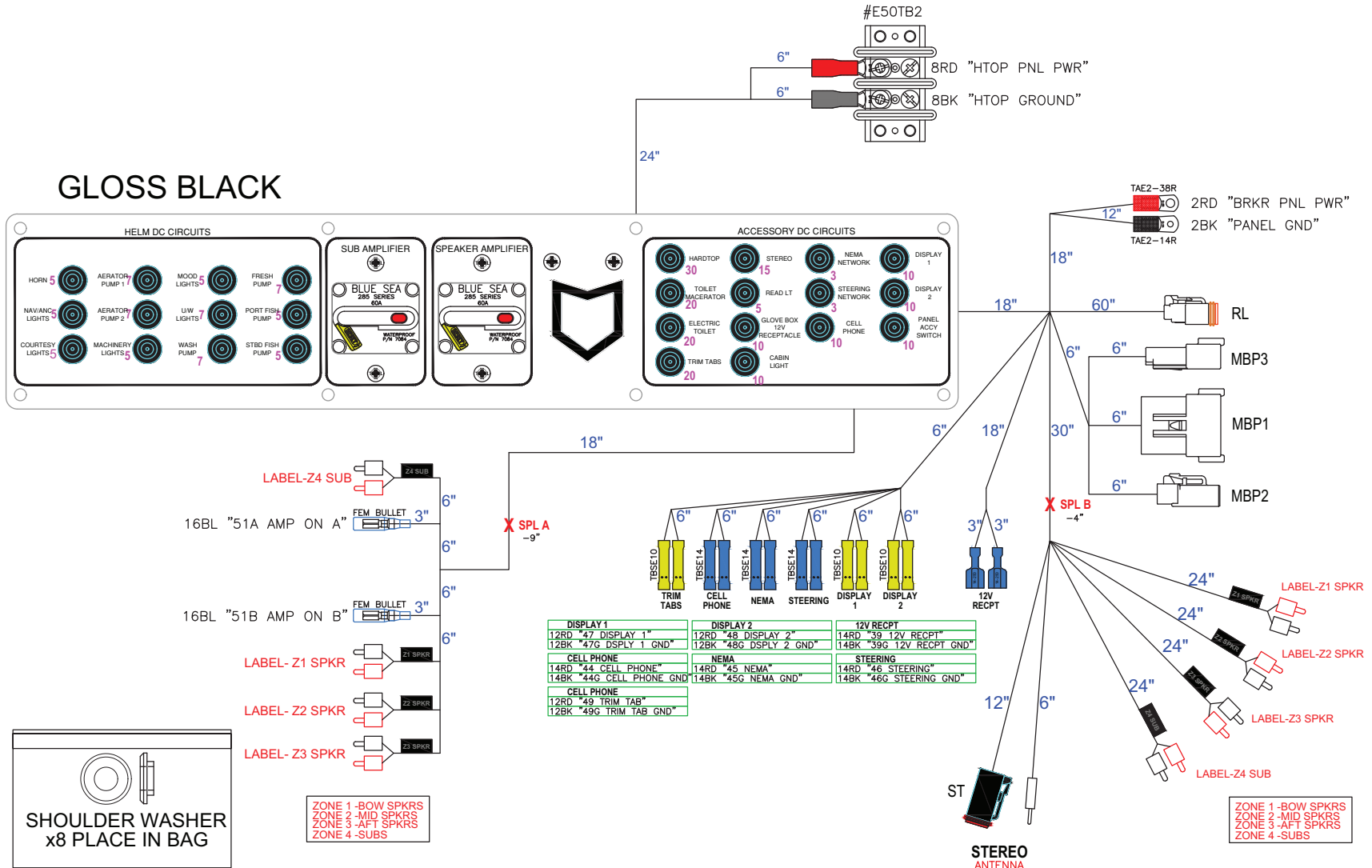
SWITCH PANEL (CONTINUED)



SWITCH PANEL (Back)



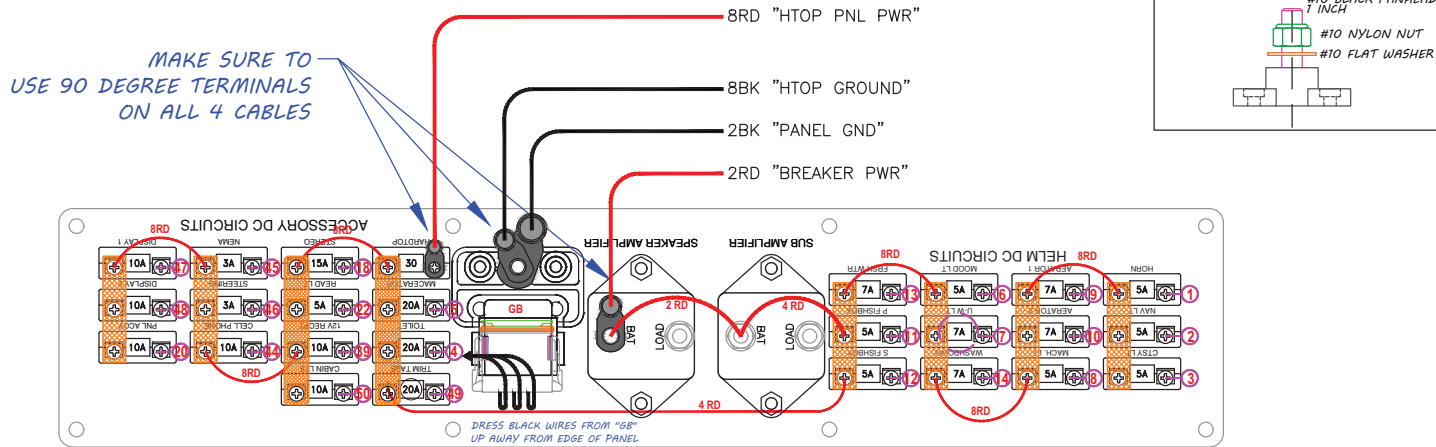
BREAKER PANEL



MAIN BREAKER PANEL(FRONT)

BREAKER PANEL (CONTINUED)

SF# 8602



2WAY - DT RECPT GRAY
CONN: DT04-2P
LOCK: W2P
TERM: 1060-14-0122

MBP3

#	WIRE DESC.
1	14RD "20 PANEL ACCY"
2	14BL "50 CABIN LTS+"

12WAY DT RECPT GRAY
CONN (DT04-12PA)
LOCK (W12P)
TERM (1060-14-0122)

MBP1

#	WIRE DESC.
1	140R "1 HORN+"
2	140R "2 NAV/ANC+"
3	140R "3 CTSY LT+"
4	140R "6 MOOD LT+"
5	140R "7 UNDRWTR LT+"
6	140R "8 MACH LT+"
7	140R "9 AERATOR #1+"
8	140R "10 AERATOR #2+"
9	140R "11 PORT FSHBX+"
10	140R "12 STBD FSHBX+"
11	14RD "13 FRESHWATER+"
12	14RD "14 WASHDOWN+"

2WAY DT RECPT GRAY
CONN (DT06-2S)
LOCK (W2S)
TERM (0462-203-12141)

MBP2

#	WIRE DESC.
1	120R "4 HEAD PWR+"
2	12BR "5 MACERATOR+"

GB - GROUND BUSS
CONN: DT06-125A-P012
LOCK: W12S-P012
TERM: 1062-14-0122

BUSS BAR, 12WAY DEUTSCH W/ 5/16" STUD
BUSS BAR (SBB-12)
MATING CONN (DT06-125A-P012)

JLST - 4WAY DT ENHANCED PLUG
CONNECTOR BLK (DT06-4S-P012)
LOCKING WEDGE GRN (W4S-P012)

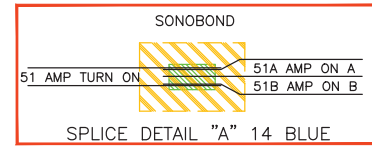
MBP4

#	WIRE DESC.
1	14RD "18 STEREO PWR (+)"
2	14BL "51 AMP TURN ON"
3	-114017 CAVITY PLUG-
4	14BK "18G STEREO GND (-)"

RL - READING LIGHT
CONN: DT06-2S-P012
LOCK: W2S-P012
TERM: 1062-14-0122

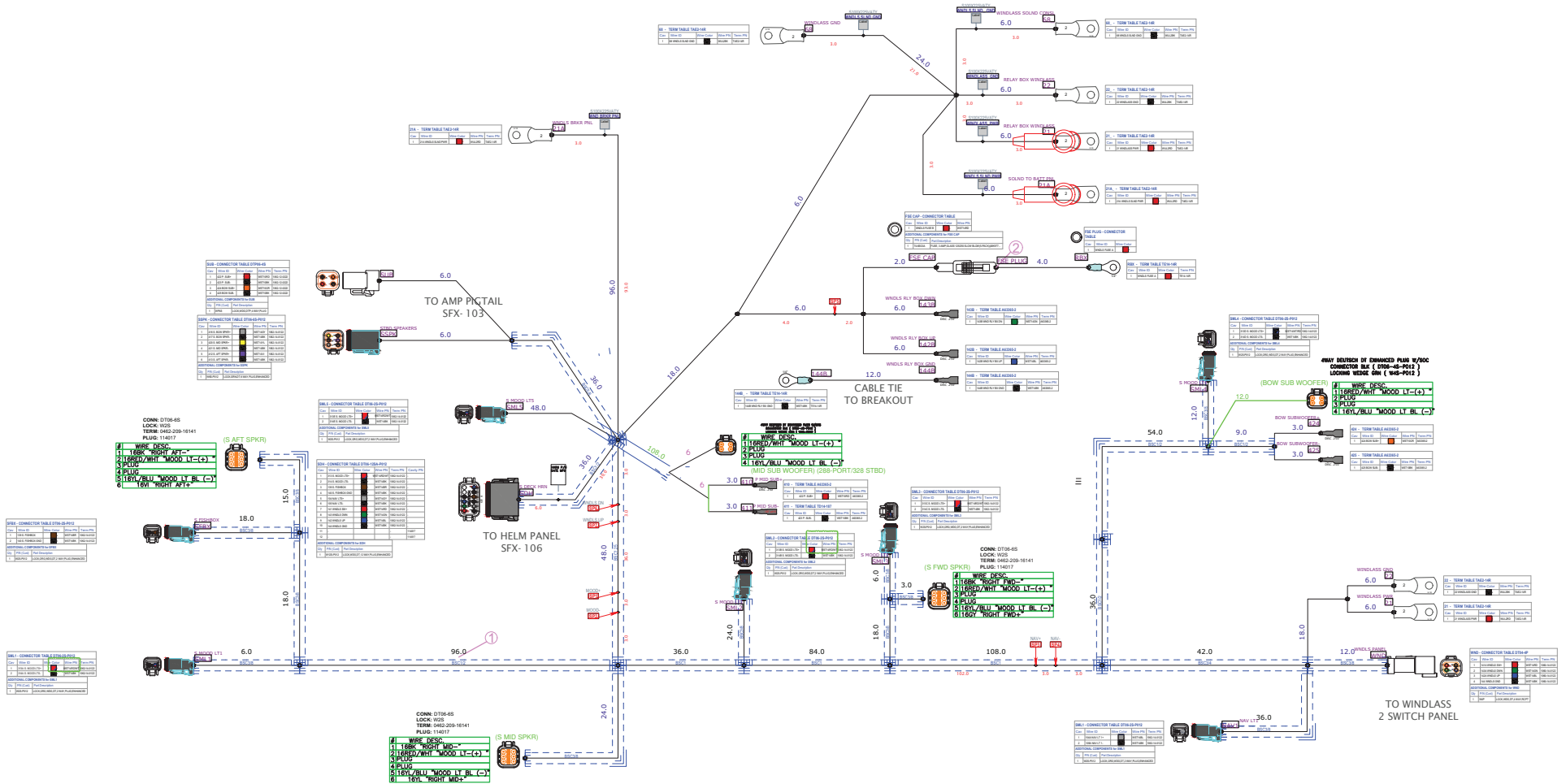
MBP5

#	WIRE DESC.
1	14BL "22 READING LT"
2	14BK "22G READING LT_GND"



MAIN BREAKER PANEL(BACK)

DECK HARNESS, STARBOARD



DECK HARNESS, PORT

PML1 - CONNECTOR TABLE DT06-2S-P012

Cav	Wire ID	Wire Color	Wire PN	Term PN
1	311A P. MOOD LT+		WST14RDW1	1002-14-0122
2	312A P. MOOD LT-		WST14BK	1002-14-0122

ADDITIONAL COMPONENTS for PML1

Qty	PN (Cust)	Part Description
1	W05-P012	LOOK.ORG.W05.DT.2 WAY PLUG.ENHANCED

PFBX - CONNECTOR TABLE DT06-2S-P012

Cav	Wire ID	Wire Color	Wire PN	Term PN
1	13M P. FISHBOX		WST14BR	1002-14-0122
2	13T P. FISHBOX GND		WST14BK	1002-14-0122

ADDITIONAL COMPONENTS for PFBX

Qty	PN (Cust)	Part Description
1	W05-P012	LOOK.ORG.W05.DT.2 WAY PLUG.ENHANCED

PDM - CONNECTOR TABLE DT04-4P

Cav	Wire ID	Wire Color	Wire PN	Term PN
1	311 P. MOOD LTA		WST14RDW1	1002-14-0122
2	312 P. MOOD LTB		WST14BK	1002-14-0122
3	13B P. FISHBOX		WST14BR	1002-14-0122
4	13T P. FISHBOX GND		WST14BK	1002-14-0122

ADDITIONAL COMPONENTS for PDM

Qty	PN (Cust)	Part Description
1	W0P	LOOK.W05.DT.4 WAY RCPT

PML4 - CONNECTOR TABLE DT06-2S-P012

Cav	Wire ID	Wire Color	Wire PN	Term PN
1	310D P. MOOD LTA		WST14RDW1	1002-14-0122
2	310D P. MOOD LTB		WST14BK	1002-14-0122

ADDITIONAL COMPONENTS for PML4

Qty	PN (Cust)	Part Description
1	W05-P012	LOOK.ORG.W05.DT.2 WAY PLUG.ENHANCED

**CONN: DT06-6S
LOCK: W2S
TERM: 0462-209-16141
PLUG: 114017**

(P AFT SPKR)

#	WIRE DESC.
1	16BK "LEFT AFT"
2	16RED/WHT "MOOD LT-(+)"
3	PLUG
4	PLUG
5	16YL/BLU "MOOD LT BL (-)"
6	16GN "LEFT AFT+"

PML2 - CONNECTOR TABLE DT06-2S-P012

Cav	Wire ID	Wire Color	Wire PN	Term PN
1	311B P. MOOD LTA		WST14RDW1	1002-14-0122
2	312B P. MOOD LTB		WST14BK	1002-14-0122

ADDITIONAL COMPONENTS for PML2

Qty	PN (Cust)	Part Description
1	W05-P012	LOOK.ORG.W05.DT.2 WAY PLUG.ENHANCED

PML3 - CONNECTOR TABLE DT06-2S-P012

Cav	Wire ID	Wire Color	Wire PN	Term PN
1	311C P. MOOD LTA		WST14RDW1	1002-14-0122
2	312C P. MOOD LTB		WST14BK	1002-14-0122

ADDITIONAL COMPONENTS for PML3

Qty	PN (Cust)	Part Description
1	W05-P012	LOOK.ORG.W05.DT.2 WAY PLUG.ENHANCED

**CONN: DT06-6S
LOCK: W2S
TERM: 0462-209-16141
PLUG: 114017**

(P MID SPKR)

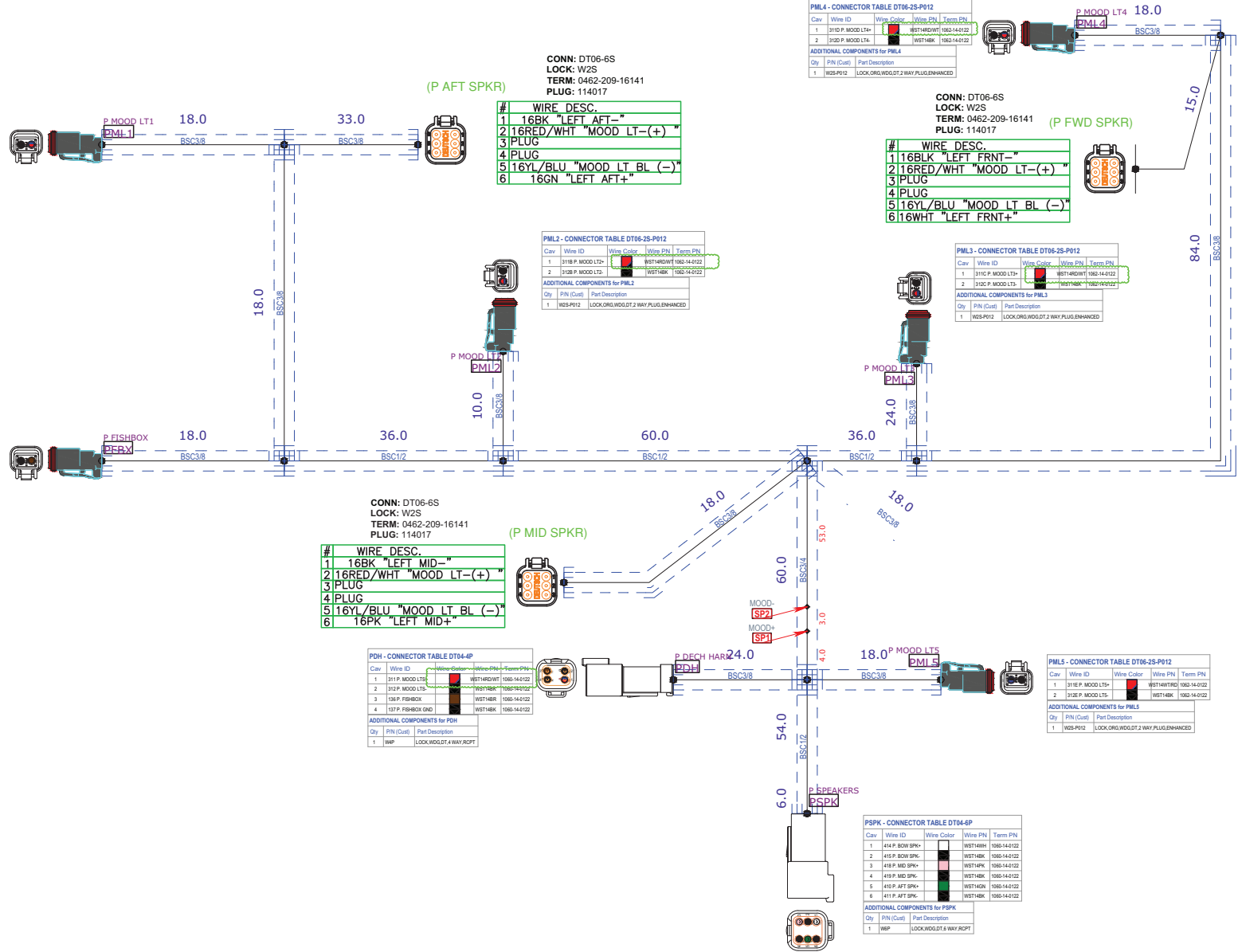
#	WIRE DESC.
1	16BK "LEFT MID"
2	16RED/WHT "MOOD LT-(+)"
3	PLUG
4	PLUG
5	16YL/BLU "MOOD LT BL (-)"
6	16PK "LEFT MID+"

PSPK - CONNECTOR TABLE DT04-6P

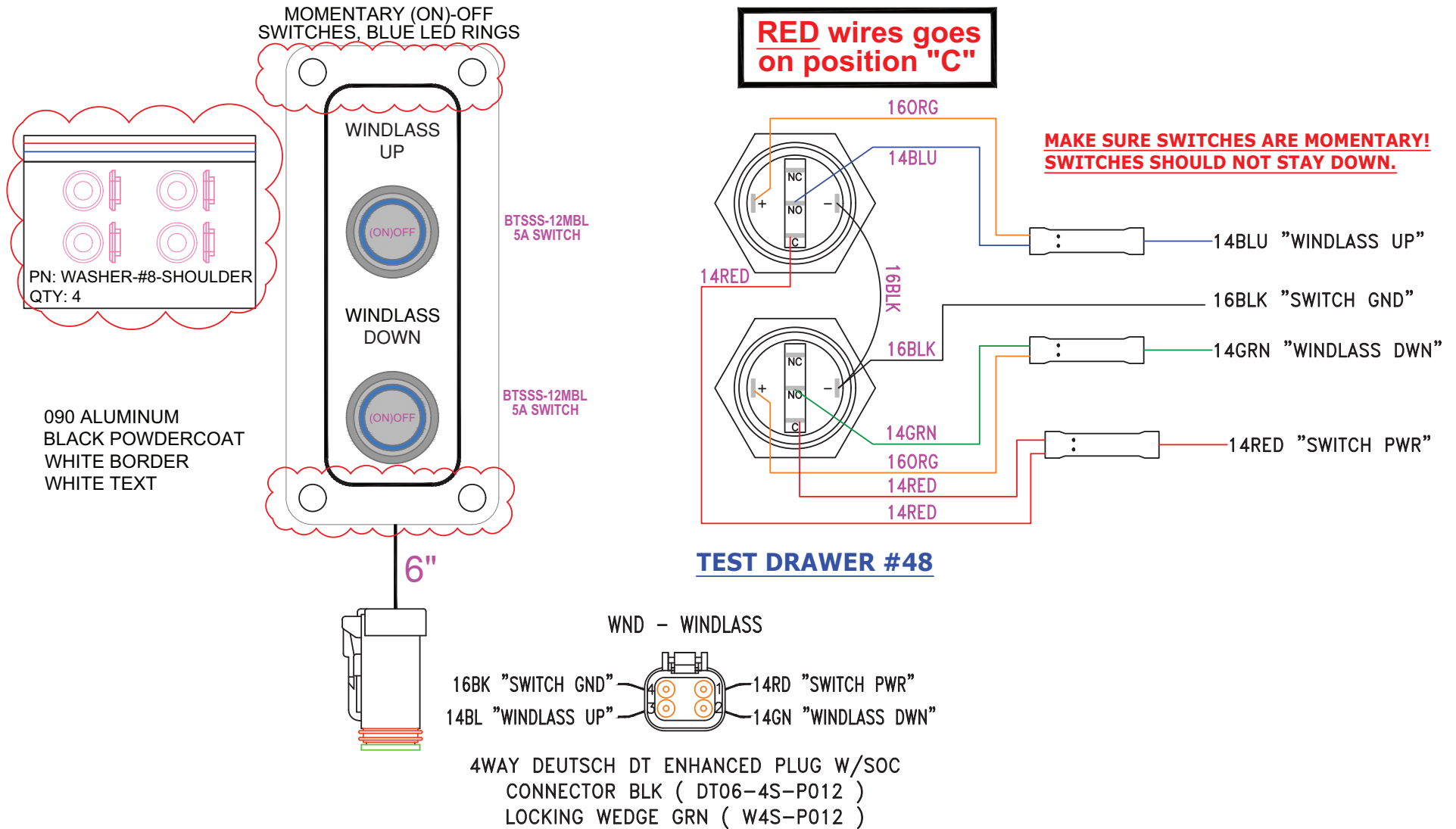
Cav	Wire ID	Wire Color	Wire PN	Term PN
1	414B BOW SPK+		WST14BK	1006-14-0122
2	415B BOW SPK-		WST14BK	1006-14-0122
3	418 P. MID SPK+		WST14PK	1006-14-0122
4	419 P. MID SPK-		WST14BK	1006-14-0122
5	410 P. AFT SPK+		WST14GN	1006-14-0122
6	411 P. AFT SPK-		WST14BK	1006-14-0122

ADDITIONAL COMPONENTS for PSPK

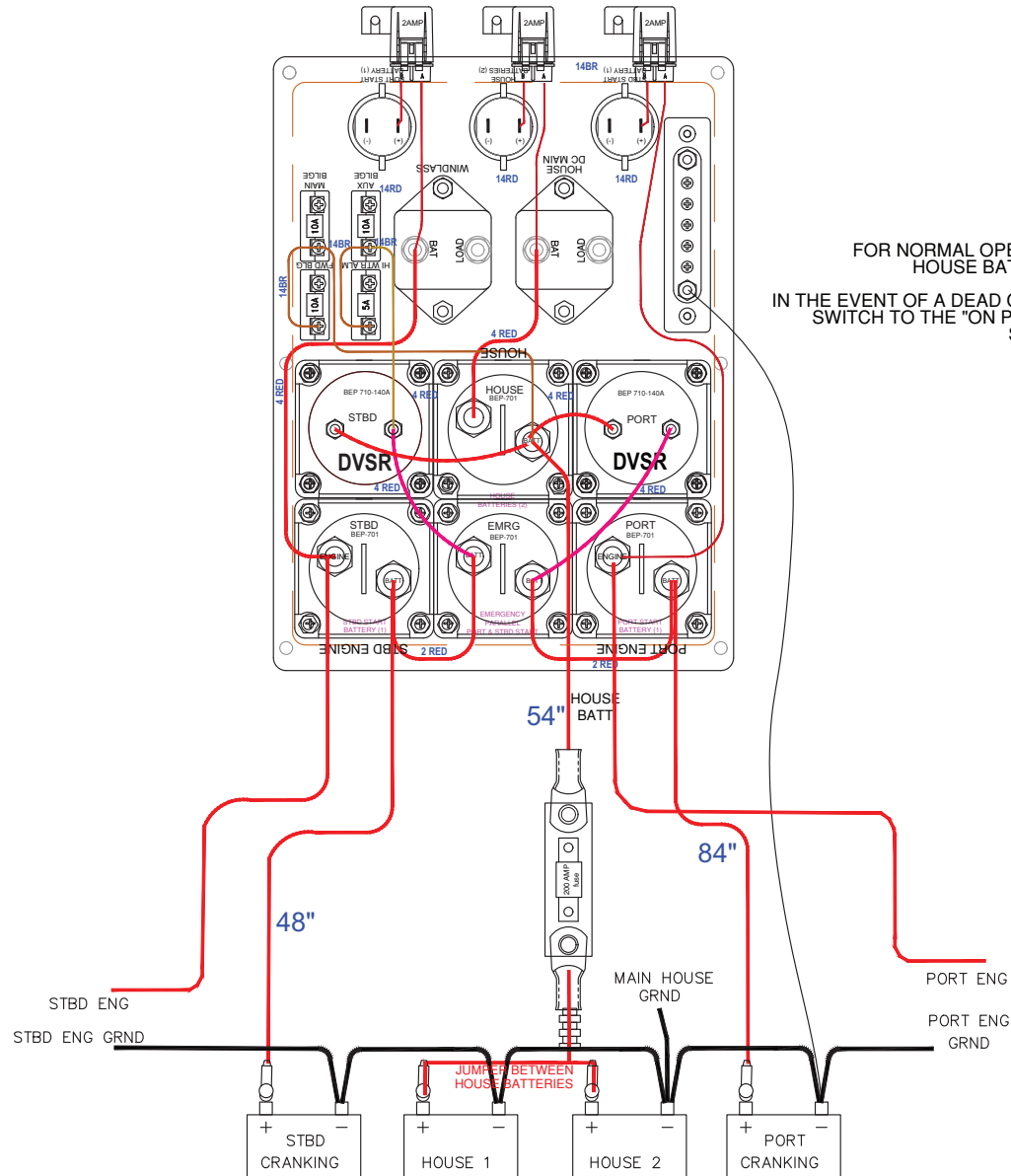
Qty	PN (Cust)	Part Description
1	W0P	LOOK.W05.DT.6 WAY RCPT



WINDLASS SWITCH PANEL



BATTERY WIRING



FOR NORMAL OPERATION - TURN PORT START, STBD START, AND HOUSE BATTERY SWITCHES TO THE "ON POSITION".

IN THE EVENT OF A DEAD CRANKING BATTERY, TURN THE "EMERGENCY PARALLEL" SWITCH TO THE "ON POSITION" TO PARALLEL THE "PORT START AND STBD START" BATTERIES TOGETHER.

This Page Intentionally Left Blank