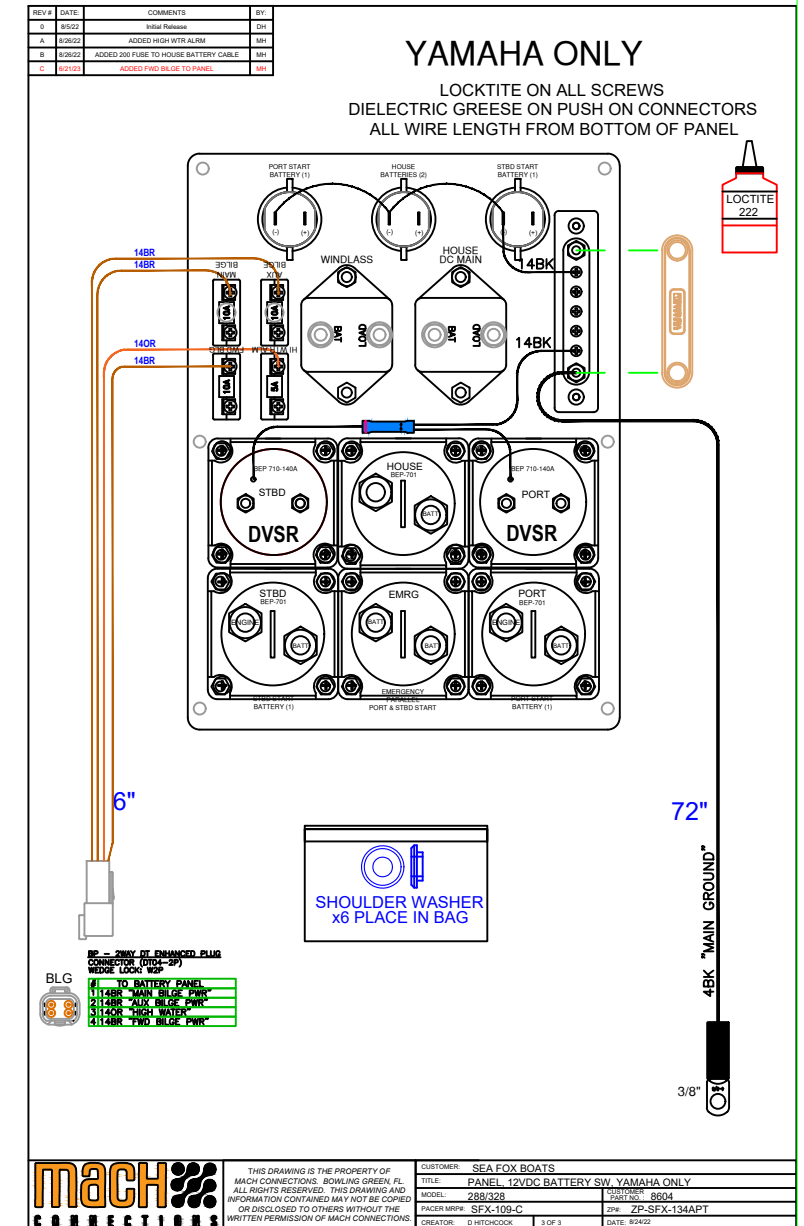
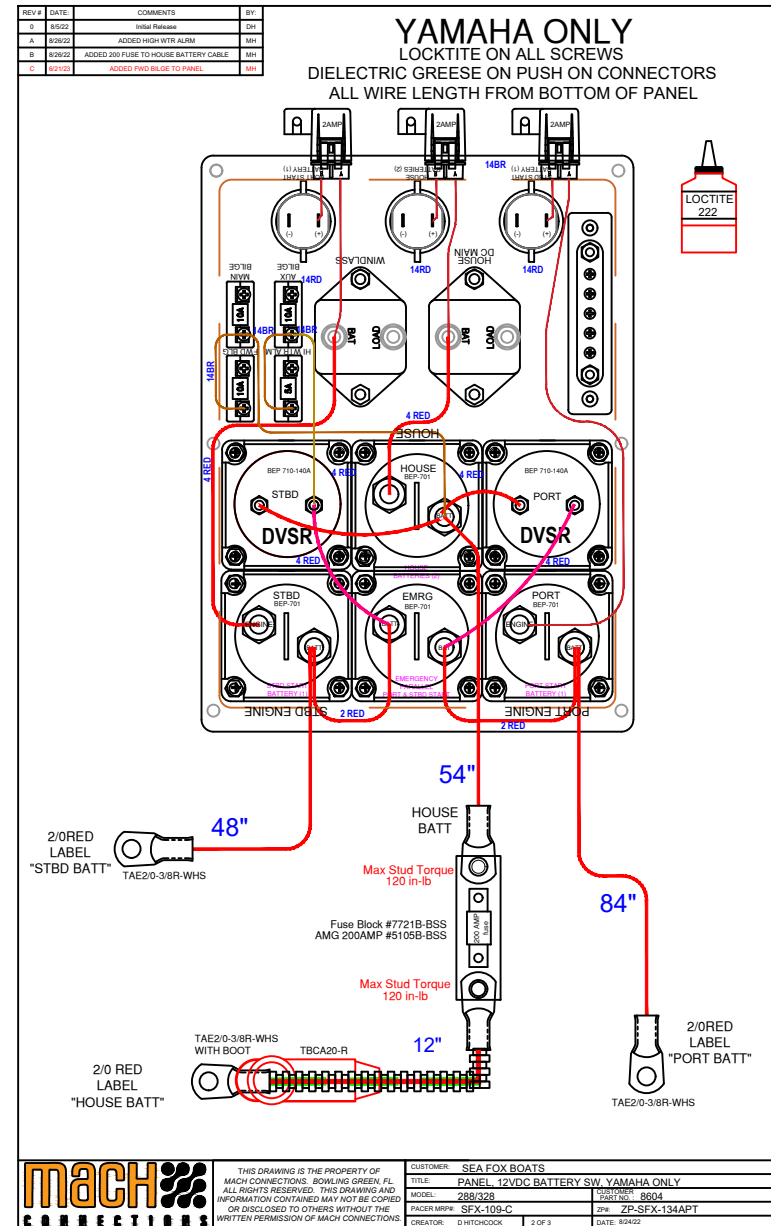
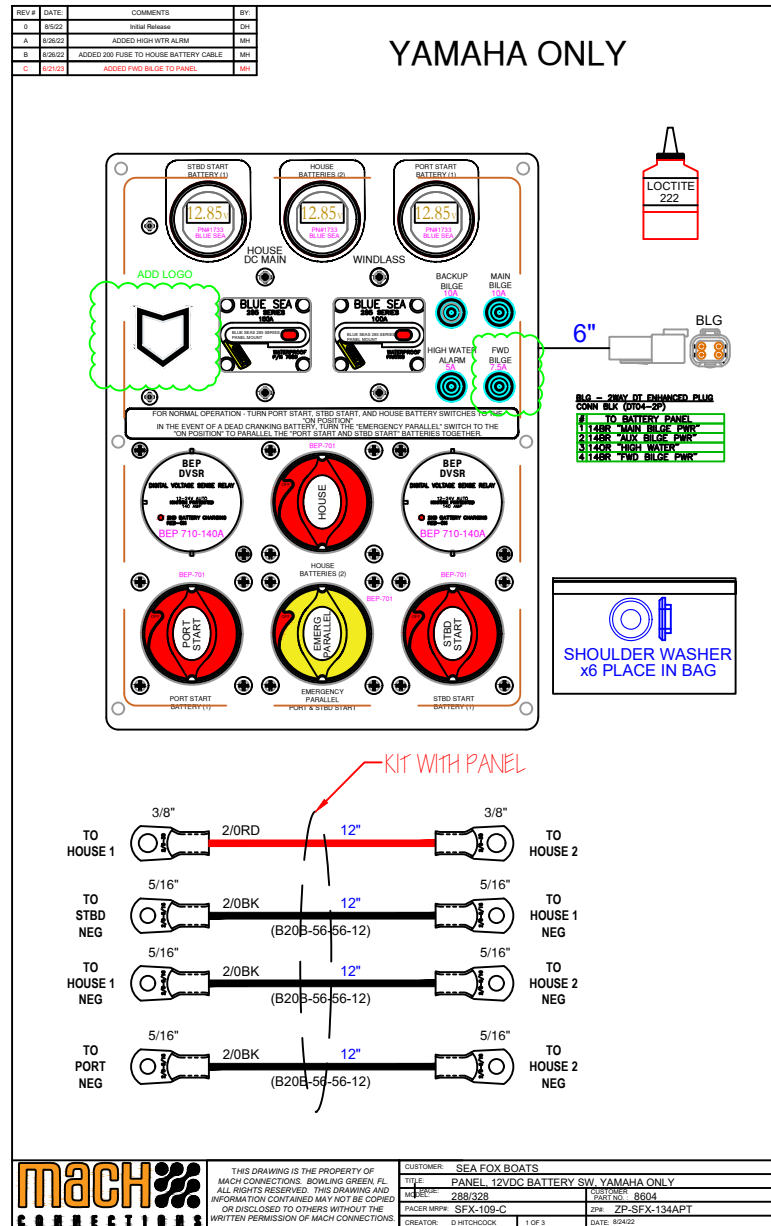
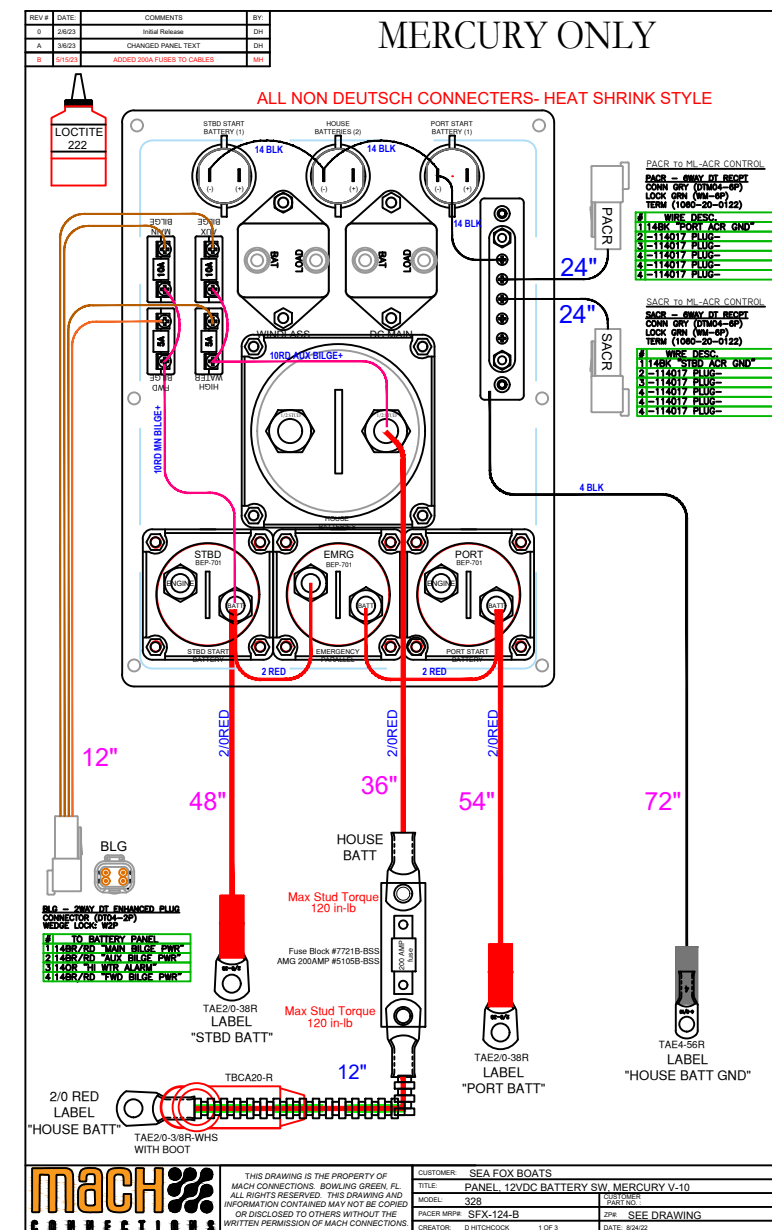
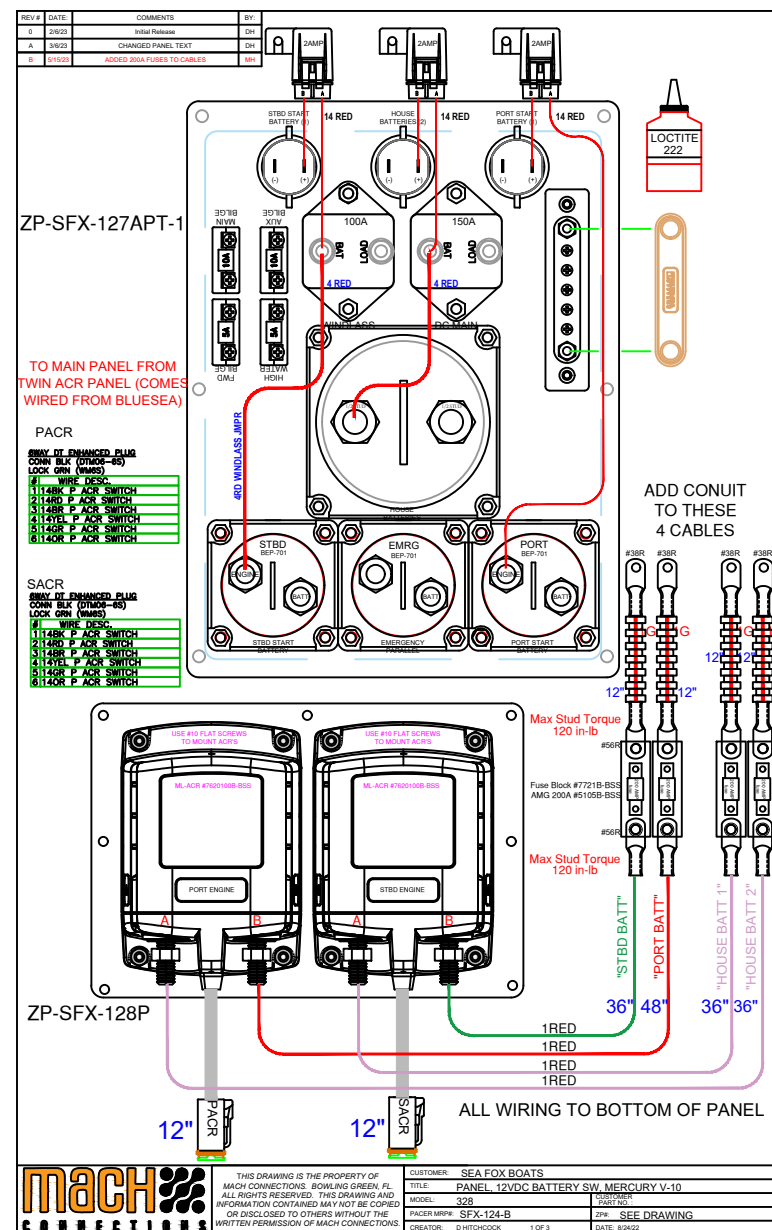
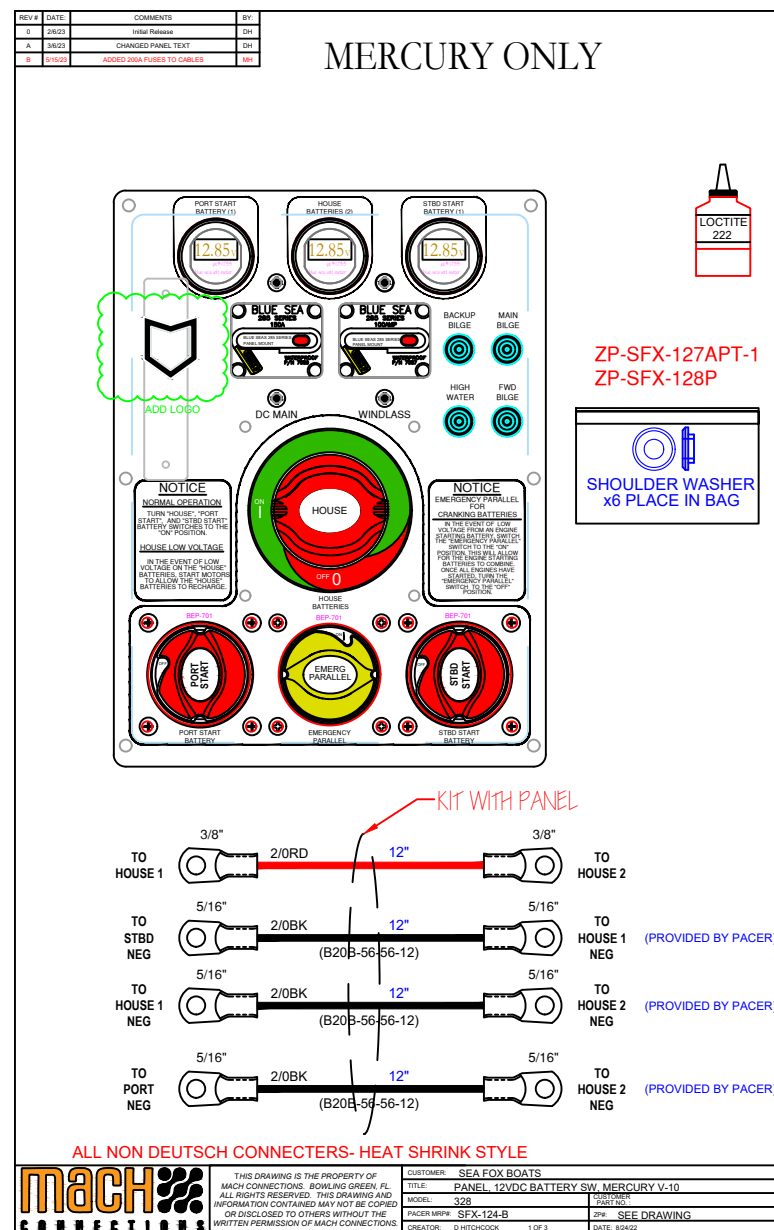


YAMAHA PANEL

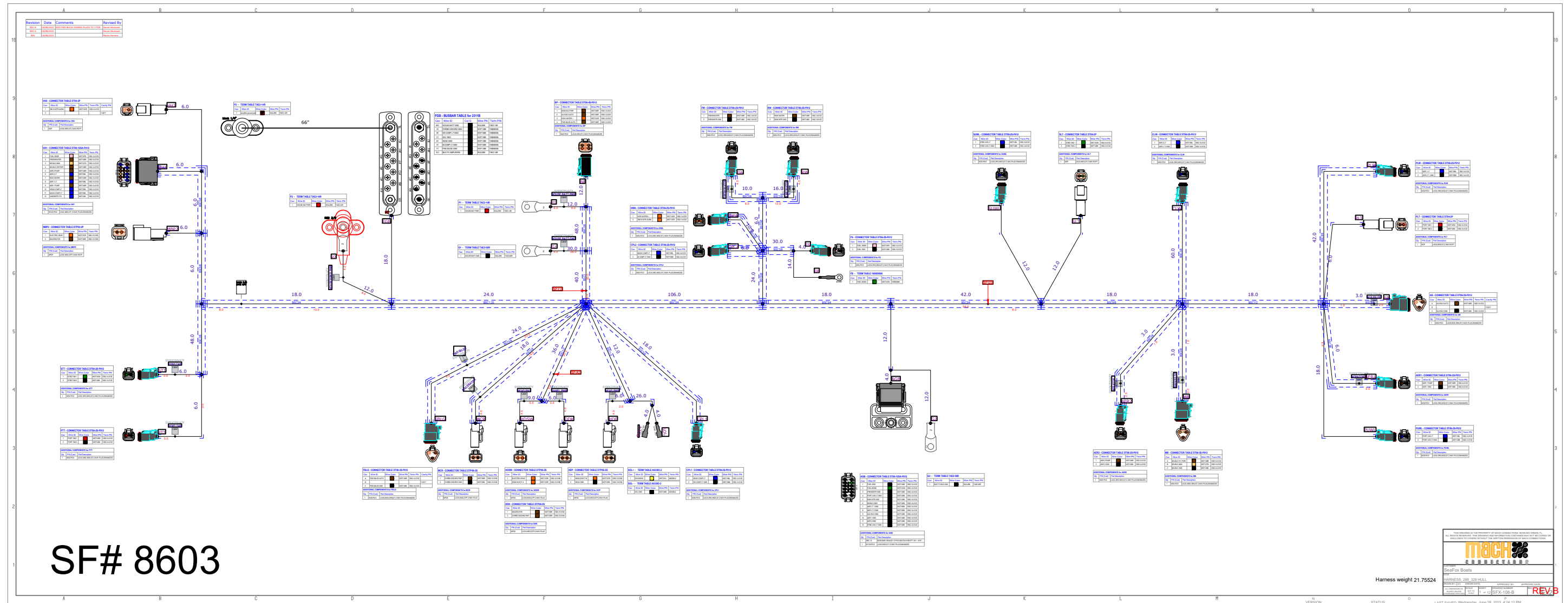


SF# 8604

MERCURY PANEL



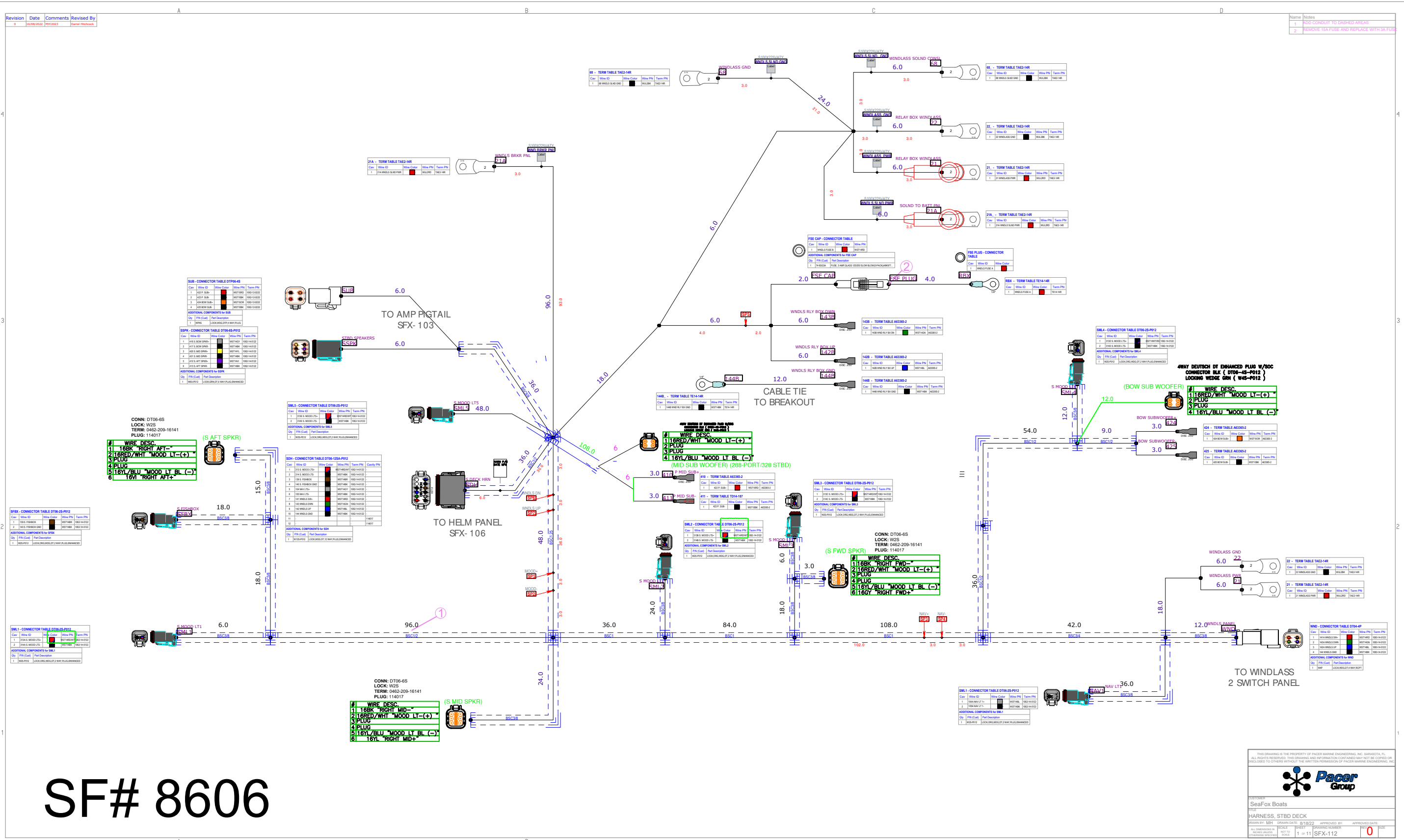
SF# 8806



SF# 8603

HULL HARNESS

mach
 SeaFox Boats
 HARNESS 288 328 HULL
 1 of 1 (SPX) 108-B
 REV B



SF# 8606

Harness weight 33.778471

STBD DECK HARNESS

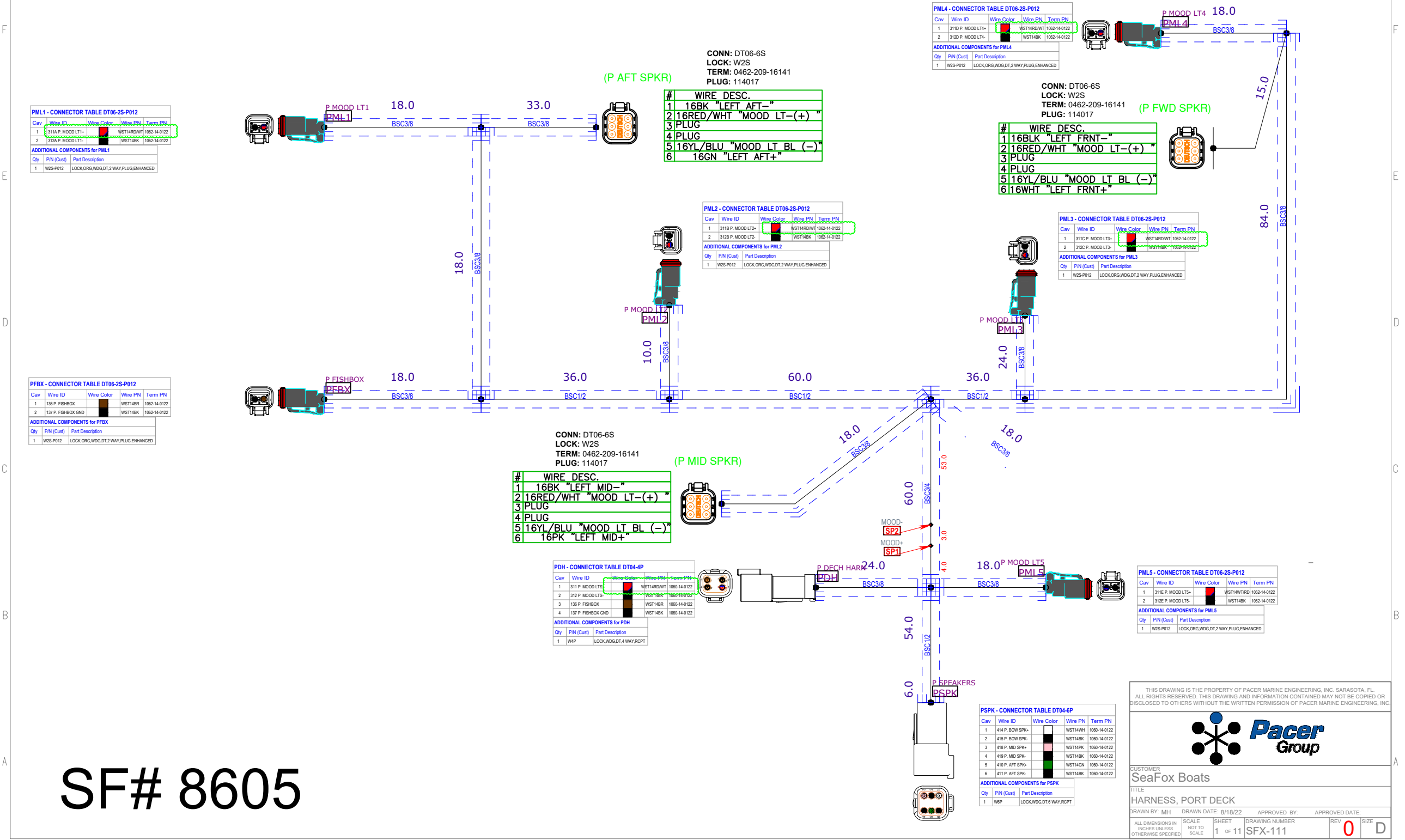
288/328 COMMANDER MY25

THIS DRAWING IS THE PROPERTY OF PACER MARINE ENGINEERING, INC. SARASOTA, FL. ALL RIGHTS RESERVED. THIS DRAWING AND INFORMATION CONTAINED HEREIN MAY NOT BE REPRODUCED OR TRANSMITTED IN ANY FORM OR BY ANY MEANS, ELECTRONIC OR MECHANICAL, INCLUDING PHOTOCOPYING, RECORDING, OR BY ANY INFORMATION STORAGE AND RETRIEVAL SYSTEM, WITHOUT THE WRITTEN PERMISSION OF PACER MARINE ENGINEERING, INC.

CUSTOMER: SeaFox Boats
 DRAWING: HARNESS, STBD DECK
 DRAWN BY: MFI
 SCALE: 1" = 11"
 SHEET: 1 OF 11
 DATE: 8/18/22
 APPROVED BY: [Signature]
 APPROVED DATE: [Date]
 REVISION: 0

Revision	Date	Comments	Revised By
0	16/08/2022	MYC2023	Darrel Hitchcock

Name	Notes
1	ADD CONDUIT TO DASHED AREAS



PML1 - CONNECTOR TABLE DT06-2S-P012

Cav	Wire ID	Wire Color	Wire PN	Term PN
1	311A P. MOOD LT1+	Red	WST14RDWHT	1062-14-0122
2	312A P. MOOD LT1-	Black	WST14BK	1062-14-0122

ADDITIONAL COMPONENTS for PML1

Qty	PN (Cust)	Part Description
1	W2S-P012	LOCK.ORG.WDG.DT.2 WAY PLUG.ENHANCED

PFBX - CONNECTOR TABLE DT06-2S-P012

Cav	Wire ID	Wire Color	Wire PN	Term PN
1	136 P. FISHBOX	Black	WST14BK	1062-14-0122
2	137 P. FISHBOX GND	Black	WST14BK	1062-14-0122

ADDITIONAL COMPONENTS for PFBX

Qty	PN (Cust)	Part Description
1	W2S-P012	LOCK.ORG.WDG.DT.2 WAY PLUG.ENHANCED

CONN: DT06-6S
LOCK: W2S
TERM: 0462-209-16141
PLUG: 114017

WIRE_DESC.

1	16BK "LEFT MID-"
2	16RED/WHT "MOOD LT-(+)"
3	PLUG
4	PLUG
5	16YL/BLU "MOOD LT BL (-)"
6	16PK "LEFT MID+"

PDH - CONNECTOR TABLE DT04-4P

Cav	Wire ID	Wire Color	Wire PN	Term PN
1	311 P. MOOD LTS	Red	WST14RDWHT	1062-14-0122
2	312 P. MOOD LTS	Black	WST14BK	1062-14-0122
3	136 P. FISHBOX	Black	WST14BK	1062-14-0122
4	137 P. FISHBOX GND	Black	WST14BK	1062-14-0122

ADDITIONAL COMPONENTS for PDH

Qty	PN (Cust)	Part Description
1	WBP	LOCK.WDG.DT.4 WAY RCPT

PML4 - CONNECTOR TABLE DT06-2S-P012

Cav	Wire ID	Wire Color	Wire PN	Term PN
1	311D P. MOOD LT4+	Red	WST14RDWHT	1062-14-0122
2	312D P. MOOD LT4-	Black	WST14BK	1062-14-0122

ADDITIONAL COMPONENTS for PML4

Qty	PN (Cust)	Part Description
1	W2S-P012	LOCK.ORG.WDG.DT.2 WAY PLUG.ENHANCED

CONN: DT06-6S
LOCK: W2S
TERM: 0462-209-16141
PLUG: 114017

WIRE_DESC.

1	16BLK "LEFT FRNT-"
2	16RED/WHT "MOOD LT-(+)"
3	PLUG
4	PLUG
5	16YL/BLU "MOOD LT BL (-)"
6	16WHT "LEFT FRNT+"

PML3 - CONNECTOR TABLE DT06-2S-P012

Cav	Wire ID	Wire Color	Wire PN	Term PN
1	311C P. MOOD LT3+	Red	WST14RDWHT	1062-14-0122
2	312C P. MOOD LT3-	Black	WST14BK	1062-14-0122

ADDITIONAL COMPONENTS for PML3

Qty	PN (Cust)	Part Description
1	W2S-P012	LOCK.ORG.WDG.DT.2 WAY PLUG.ENHANCED

PML5 - CONNECTOR TABLE DT06-2S-P012

Cav	Wire ID	Wire Color	Wire PN	Term PN
1	311E P. MOOD LTS+	Red	WST14RDWHT	1062-14-0122
2	312E P. MOOD LTS-	Black	WST14BK	1062-14-0122

ADDITIONAL COMPONENTS for PML5

Qty	PN (Cust)	Part Description
1	W2S-P012	LOCK.ORG.WDG.DT.2 WAY PLUG.ENHANCED

PSPK - CONNECTOR TABLE DT04-6P

Cav	Wire ID	Wire Color	Wire PN	Term PN
1	414 P. BOW SPK+	Red	WST14WH	1062-14-0122
2	415 P. BOW SPK-	Black	WST14BK	1062-14-0122
3	418 P. MID SPK+	Red	WST14PK	1062-14-0122
4	419 P. MID SPK-	Black	WST14BK	1062-14-0122
5	410 P. AFT SPK+	Red	WST14GN	1062-14-0122
6	411 P. AFT SPK-	Black	WST14BK	1062-14-0122

ADDITIONAL COMPONENTS for PSPK

Qty	PN (Cust)	Part Description
1	WBP	LOCK.WDG.DT.6 WAY RCPT

SF# 8605

Harness weight 4.2775

STATUS:

VERSION:

THIS DRAWING IS THE PROPERTY OF PACER MARINE ENGINEERING, INC. SARASOTA, FL. ALL RIGHTS RESERVED. THIS DRAWING AND INFORMATION CONTAINED MAY NOT BE COPIED OR DISCLOSED TO OTHERS WITHOUT THE WRITTEN PERMISSION OF PACER MARINE ENGINEERING, INC.

CUSTOMER: SeaFox Boats

TITLE: HARNESS, PORT DECK

DRAWN BY: MJH DRAWN DATE: 8/18/22 APPROVED BY: APPROVED DATE:

ALL DIMENSIONS IN INCHES UNLESS OTHERWISE SPECIFIED SCALE: NOT TO SCALE SHEET: 1 of 11 DRAWING NUMBER: SFX-111 REV: 0 SIZE: D

LAST SAVED: Wednesday, January 18, 2023, 8:56:10 AM

PORT DECK HARNESS

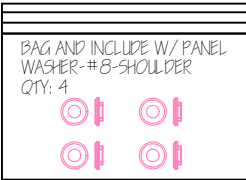
288/328 COMMANDER MY25

SWITCH PANEL (Front)

REV #	DATE:	COMMENTS	BY:
0	8/16/22	MY 2023 CHANGES	MH
A	8/29/22	ADDED HI WATER ALARM & SWITCH	DH
B	10/24/22	CHANGED SWITCHES TO BLUEWATER	MH
C	12/7/23	CHANGED MOOD LT WIRING & MAIN GND GA. ALSO ADDED DIODE FOR HI WTR HORN	DH

PANEL: ZP-SFX-108APT
 INSERT: ZP-SFX-109PLE
 BACKER: ZP-SFX-110APC

NAV LIGHTS SPLICES TO
 -BACKLIGHT (HARDTOP PANEL)
 -BOW/NAV LT
 -PANEL BACK LIGHT
 -COMPASS LIGHT



HH2 - 2WAY DT ENHANCED PLUG
 CONN BLK (DT06-2S-P012)
 LOCK GRN (W2S-P012)
 TERM (1062-14-0122)

#	WIRE DESC.
1	140R "396A HI WTR ALRM"
2	PLUG

HH1
 12WAY DT RECPT GRAY
 CONN (DT04-12PA)
 LOCK (W12P)
 TERM (1060-14-0122)

#	WIRE DESC.
1	14PK #215 FUEL SNDR
2	14BR #122 FRESHWATER LD
3	14TN #114 BILGE MAN
4	14BR #113 IN MN BLG AUTO
5	14BR #173 AER 2 PMP
6	14BL #155 AER 2 LT
7	14BR #125 RAW WATER LD
8	14BL #152 AER 1 LT
9	14BR #170 AER 1 PMP
10	14BL #322 COMP LT HEAD
11	14BL #320 COMP LT/MACH
12	14BL #131 U/W LTS

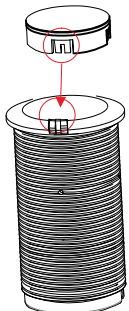
HWA-WAY DEUTSCH DIODE
 CONN - DT04-2P-RT01
 CONN - DT06-2S-P012
 LOCK - W2S-P012

#	WIRE DESCRIPTION
1	140R/RD "396B H/W ALARM"
2	140R "396A HI WTR ALRM"

MBP1 - 12WAY DT PLUG KEY "A"
 CONN GRY (DT06-12SA-P012)
 LOCK GRN (W12S-P012)
 TERM (1062-14-0122)

#	WIRE DESC.
1	140R #100 HORN LN
2	140R #103 NAV/ANC LTS LN
3	140R #220 COURT LTS LN
4	140R #310 MOOD LTS LN
5	140R #130 U/W LTS LN
6	140R #319 MACH LTS LN
7	140R #169 AER #1 LN
8	140R #172 AER #2 LN
9	140R #135 P. FISHBX LN
10	140R #138 S. FISHBOX LN
11	14RD #121 FRESHWATER LN
12	14RD #124 RAW WATER LN

- NOTES:
1. MAKE SURE LIGHTS ARE CORRECTLY TAPED TO THE BACK OF PANEL
 2. PANEL HAS RUBBER GASKET ON BACK
 3. ADD CONDUIT TO GREEN DASHED LINES
 4. PANEL IS GLOSS BLACK, BLUE BACKLIT



ADD WEATHER STRIP TO BACK OF PANEL

ACTUATOR NOTE:
 ALIGNED ACTUATOR KEY TO SWITCH KEY AND PRESS FIRMLY

TAE4-14R WHS 8"
 4BK "#4 HELM MAIN GND"

SDH
 12WAY DT RECPT GRAY
 CONN (DT04-12PA)
 LOCK (W12P)
 TERM (1060-14-0122)

#	WIRE DESC.
1	14RD/WH #313 S. MOOD LTS
2	14YL/BL #314 S. MOOD LTS GND
3	14BR #139 S. FISHBOX
4	14BK #140 STB FISHBOX GND
5	14GY #104B BOW/NAV LTS
6	14BK #105 BOW/NAV LTS GND
7	14RD #141 WNDLS SW PWR
8	14GN #143 WINDLAS DWN
9	14BL #142 WINDLASS UP
10	14BK #144 WINDLASS GND
11	114017 PLUG-
12	114017 PLUG-

OLD- 2018-22MY HARDTOPS

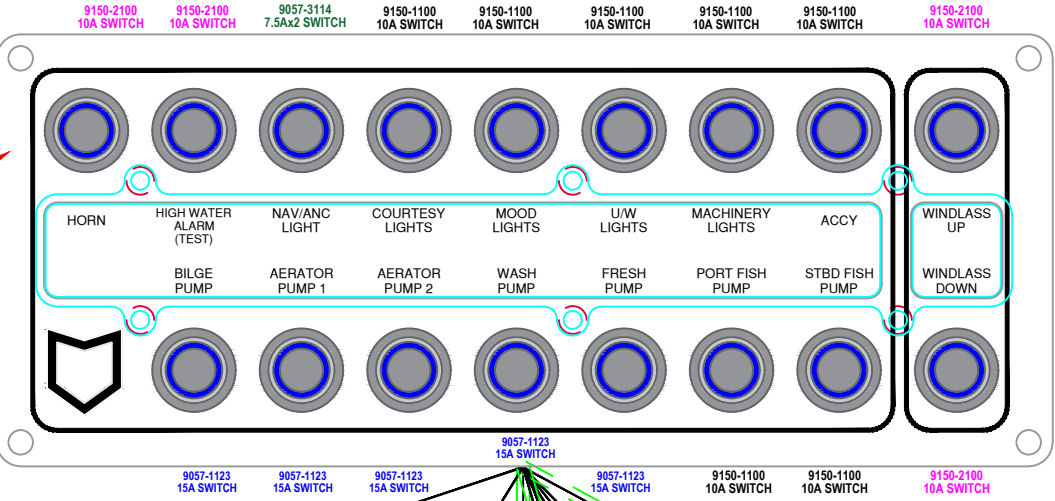
HT1 - 4WAY DT RECPT
 CONN GRY (DT04-4P)
 LOCK GRN (W4P)
 TERM (1060-14-0122)

#	WIRE DESC.
1	114017 PLUG-
2	14GY #109A ANC LT
3	140R #100A HORN
4	16GY #306 BACKLIGHT HTOP

NEW-2023MY HARDTOPS

HT2 - 2WAY DT ENHANCED PLUG
 CONN BLK (DT06-2S-P012)
 LOCK GRN (W2S-P012)
 TERM (1062-14-0122)

#	WIRE DESC.
1	14GY #109B ANC LT
2	140R #100B HORN



TO HULL HARNESS

FROM BREAKER PANEL

FROM BREAKER PANEL

TO S DECK HARN

SDH

TO HARDTOP

HT1

HT2

STB LEG HARNESS

PDH - TO P DECK HARN

PDH
 4WAY DT ENHANCED PLUG
 CONN BLK (DT06-4S-P012)
 LOCK GRN (W4S-P012)
 TERM (1062-14-0122)

#	WIRE DESC.
1	14RD/WH #311 P. MOOD LTS
2	14YL/BL #312 P. MOOD LTS GND
3	14BR #136 P. FISHBOX
4	14BK #137 P. FISHBOX GND

CPL - 2WAY DT ENHANCED PLUG
 CONN BLK (DT06-2S-P012)
 LOCK GRN (W2S-P012)
 TERM (1062-14-0122)

#	WIRE DESC.
1	16BL #298 COMPASS LT
2	16BK #299 COMPASS LT GND

MBP3 - 2WAY DT ENHANCED PLUG
 CONN BLK (DT06-2S-P012)
 LOCK GRN (W2S-P012)
 TERM (1062-14-0122)

#	WIRE DESC.
1	140R #444 ACCY SWITCH
2	14BL #230 CABIN LT

CL1 - 2WAY DT ENHANCED PLUG
 CONN BLK (DT06-2S-P012)
 LOCK GRN (W2S-P012)
 TERM (1062-14-0122)

#	WIRE DESC.
1	14BL #221 COURT LT #1
2	14BK #222 COURT LT #1 GND

CL2 - 2WAY DT ENHANCED PLUG
 CONN BLK (DT06-2S-P012)
 LOCK GRN (W2S-P012)
 TERM (1062-14-0122)

#	WIRE DESC.
1	14BL #223 COURT LT #2
2	14BK #224 COURT LT #2 GND

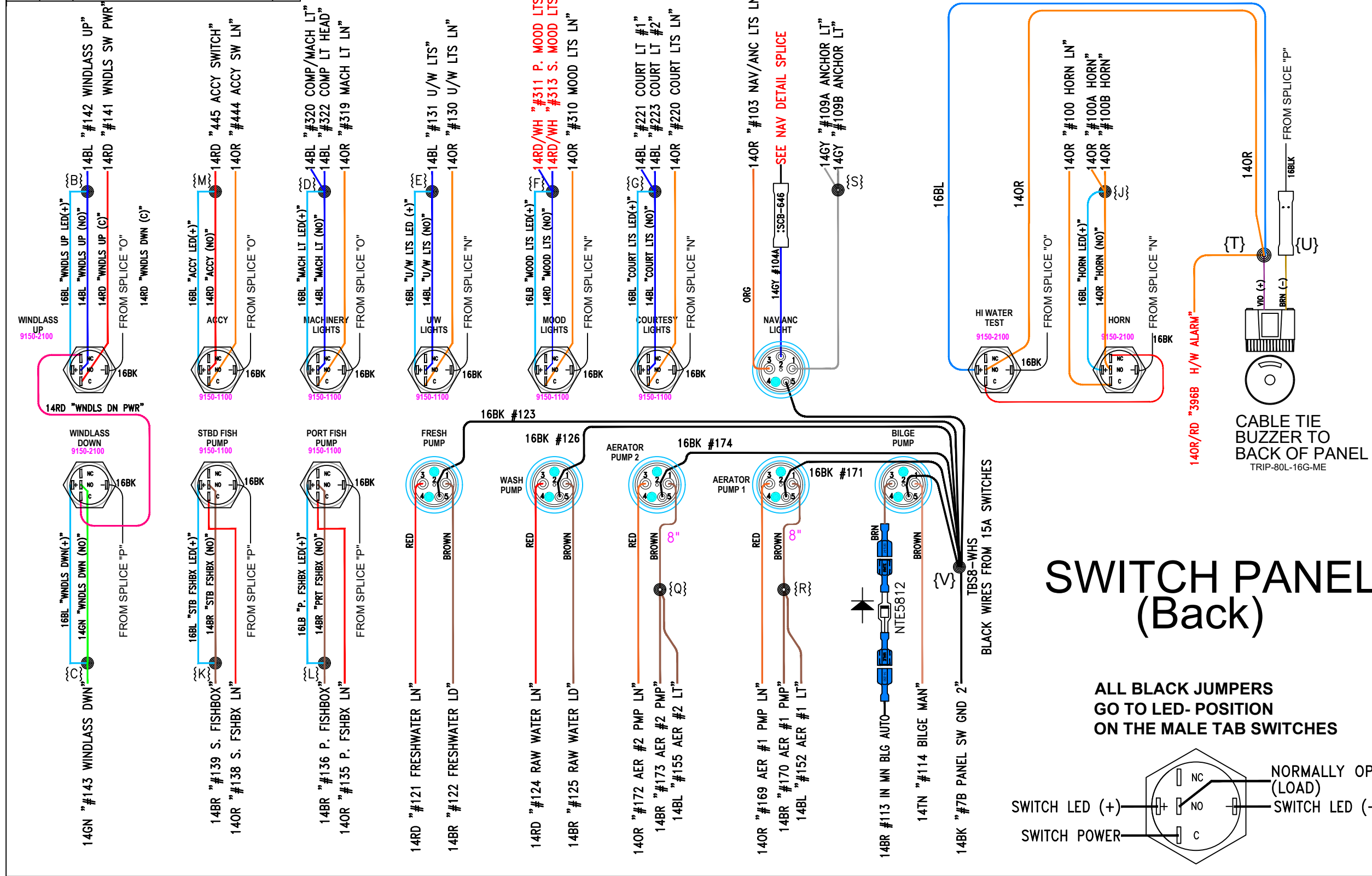
CBL - 2WAY DT ENHANCED PLUG
 CONN BLK (DT06-2S-P012)
 LOCK GRN (W2S-P012)
 TERM (1062-14-0122)

#	WIRE DESC.
1	14BL #230 CABIN LT
2	14BK #231 CABIN LT GND

CUSTOMER: SEA FOX BOATS
 TITLE: PANEL, 2023 HELM SWITCH
 MODEL: 288/328
 PAGER MRP#: SFX-106-C
 CREATOR: MHERRERA
 DATE: 8/17/2022
 PAGE: 1 OF 4
 SEE PRINT

THIS DRAWING IS THE PROPERTY OF PACER MARINE ENGINEERING, INC. SARASOTA, FL. ALL RIGHTS RESERVED. THIS DRAWING AND INFORMATION CONTAINED MAY NOT BE COPIED OR DISCLOSED TO OTHERS WITHOUT THE WRITTEN PERMISSION OF PACER MARINE, INC.

0	8/16/22	MY 2023 CHANGES	MH	B	10/24/22	CHANGED SWITCHES TO BLUEWATER	MH
A	8/29/22	ADDED HI WATER ALARM & SWITCH	DH	C	12/7/23	CHANGED MOOD LT WIRING & MAIN GND GA. ALSO ADDED DIODE FOR HI WTR HORN	DH



THIS DRAWING IS THE PROPERTY OF PACER MARINE ENGINEERING, INC. SARASOTA, FL. ALL RIGHTS RESERVED. THIS DRAWING AND INFORMATION CONTAINED MAY NOT BE COPIED OR DISCLOSED TO OTHERS WITHOUT THE WRITTEN PERMISSION OF PACER MARINE, INC.

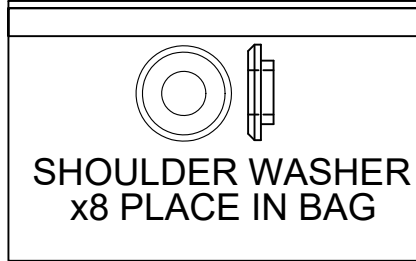
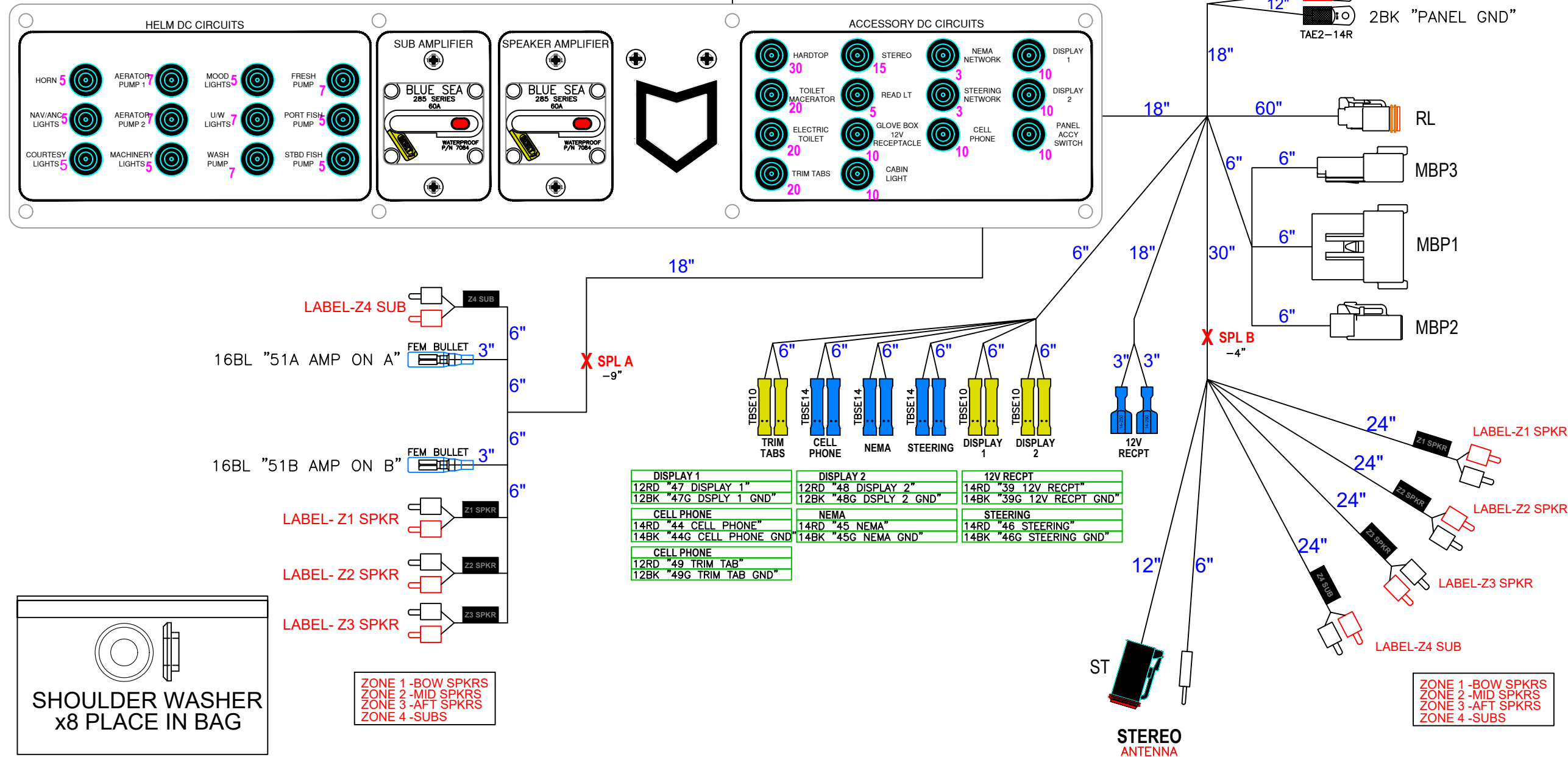
Pacer Marine Engineering Inc.

CUSTOMER:	CUSTOMER
TITLE:	TITLE
MODEL:	BOATMODEL
PAGER MRP#:	PACERMRP#
CREATOR:	CREATOR
PAGE:	PAGE
DATE:	DATE
CUSTOMER PART NO.:	CUSTOMERMRP
ZP#:	ZP#

REV #	DATE:	COMMENTS	BY:
0	8/17/22	INITIAL RELEASE	DH
A	8/26/22	ADDED TRIM TABS AND CABIN LTS MOVED AMP BREAKOUT	MH
B	12/7/23	NEW LOGO, CHANGE HTOP BRKR TO 30A, HTOP CONNECTION TO TERMBLK LENGTH CHANGE	MH
C	8/9/24	CHANGE U/W LT TO 7A, STEREO CHANGED TO JL, DELETE TELEMUTE AND ILLUMINATION	DA

SF# 8602

GLOSS BLACK



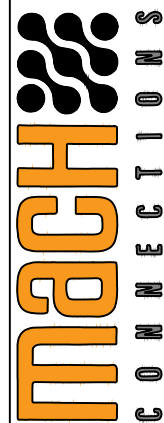
ZONE 1 -BOW SPKRS
ZONE 2 -MID SPKRS
ZONE 3 -AFT SPKRS
ZONE 4 -SUBS

ZONE 1 -BOW SPKRS
ZONE 2 -MID SPKRS
ZONE 3 -AFT SPKRS
ZONE 4 -SUBS

DISPLAY 1	DISPLAY 2	12V RECPT
12RD "47 DISPLAY 1"	12RD "48 DISPLAY 2"	14RD "39 12V RECPT"
12BK "47G DSDPLY 1 GND"	12BK "48G DSDPLY 2 GND"	14BK "39G 12V RECPT GND"
CELL PHONE	NEMA	STEERING
14RD "44 CELL PHONE"	14RD "45 NEMA"	14RD "46 STEERING"
14BK "44G CELL PHONE GND"	14BK "45G NEMA GND"	14BK "46G STEERING GND"
CELL PHONE		
12RD "49 TRIM TAB"		
12BK "49G TRIM TAB GND"		

CUSTOMER: SEAFOX BOATS
TITLE: PANEL, 2024 MAIN DC BREAKER
MODEL: 288/328
PACER MRP#: SFX-107-C
CREATOR: D HITCHCOCK
PAGE: 1 OF 2

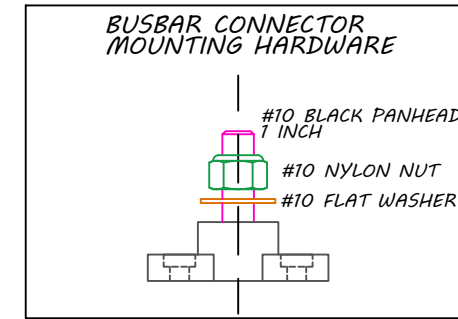
THIS DRAWING IS THE PROPERTY OF MACH CONNECTIONS. BOWLING GREEN, FL. ALL RIGHTS RESERVED. THIS DRAWING AND INFORMATION CONTAINED MAY NOT BE COPIED OR DISCLOSED TO OTHERS WITHOUT THE WRITTEN PERMISSION OF MACH CONNECTIONS.



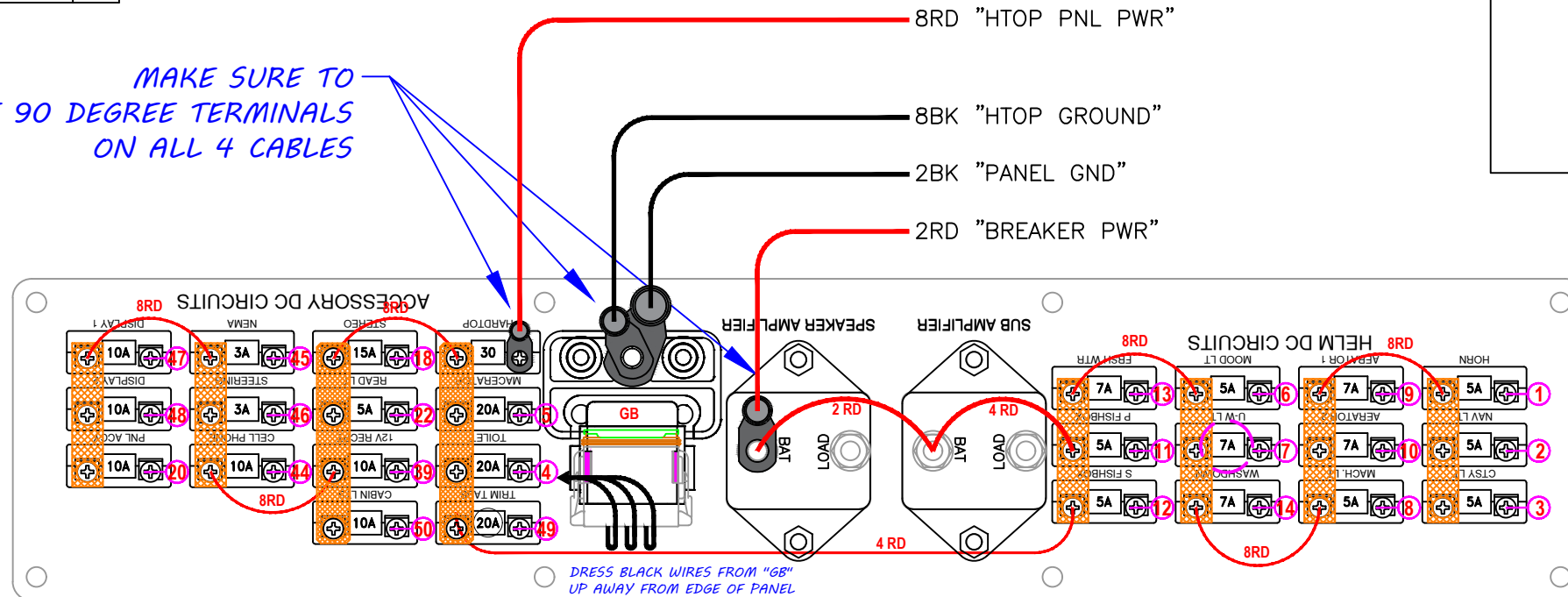
MAIN BREAKER PANEL(FRONT)

E:	COMMENTS	BY:
22	INITIAL RELEASE	DH
22	ADDED TRIM TABS AND CABIN LTS MOVED AMP BREAKOUT	MH
23	NEW LOGO CHANGE HTOP BRKR TO 30A HTOP CONNECTION TO TERMBLK LENGTH CHANGE	MH
24	CHANGE UW LT TO 7A. STEREO CHANGED TO JL, DELETE TELEMUTE AND ILLUMINATION	DA

SF# 8602



MAKE SURE TO
USE 90 DEGREE TERMINALS
ON ALL 4 CABLES



2WAY - DT RECPT GRAY
CONN: DT04-2P
LOCK: W2P
TERM: 1060-14-0122

MBP3



#	WIRE DESC.
1	14RD "20 PANEL ACCY"
2	14BL "50 CABIN LTS"

12WAY DT RECPT GRAY
CONN (DT04-12PA)
LOCK (W12P)
TERM (1060-14-0122)

MBP1



#	WIRE DESC.
1	14OR "1 HORN+"
2	14OR "2 NAV/ANC+"
3	14OR "3 CTSY LT+"
4	14OR "6 MOOD LT+"
5	14OR "7 UNDRWTR LT+"
6	14OR "8 MACH LT+"
7	14OR "9 AERATOR #1+"
8	14OR "10 AERATOR #2+"
9	14OR "11 PORT FSHBX+"
10	14OR "12 STBD FSHBX+"
11	14RD "13 FRESHWATER+"
12	14RD "14 WASHDOWN+"

2WAY DT RECPT GRAY
CONN (DTP06-2S)
LOCK (WP2S)
TERM (0462-203-12141)

MBP2



#	WIRE DESC.
1	12OR "4 HEAD PWR+"
2	12BR "5 MACERATOR+"

JLST - 4WAY DT ENHANCED PLUG
CONNECTOR BLK (DT06-4S-P012)
LOCKING WEDGE GRN (W4S-P012)



#	WIRE DESC.
1	14RD "18 STEREO PWR (+)"
2	14BL "51 AMP TURN ON"
3	-114017 CAVITY PLUG-
4	14BK "18G STEREO GND (-)"

RL - READING LIGHT
CONN: DT06-2S-P012
LOCK: W2S-P012
TERM: 1062-14-0122

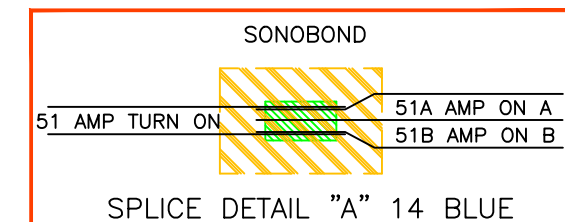


#	WIRE DESC.
1	14BL "22 READING LT"
2	14BK "22G READING LT GND"

GB - GROUND BUSS
CONN: DT06-12SA-P012
LOCK: W12S-P012
TERM: 1062-14-0122



#	WIRE DESC.
1	14BK "39G 12V RECPT GND"
2	12BK "47G DSPLY 1 GND"
3	12BK "48G DSPLY 2 GND"
4	14BK "46G STEERING GND"
5	14BK "45G NEMA GND"
6	14BK "44G CELL PHONE GND"
7	14BK "22G READING LT GND"
8	14BK "18G STEREO GND"
9	-114017 CAVITY PLUG-
10	-114017 CAVITY PLUG-
11	-114017 CAVITY PLUG-
12	12BK "49G TRIM TABS GND"



CUSTOMER: SEAFXOY BOATS	TITLE: PANEL, 2024 MAIN DC BREAKER
MODEL: 288/328	CUSTOMER PART NO.: 8602
PAGER MRP#: SFX-107-C	ZP#: ZP-SFX-120APT-2
CREATOR: D HITCHCOCK	DATE: 8/17/22
PAGE: 1 OF 2	

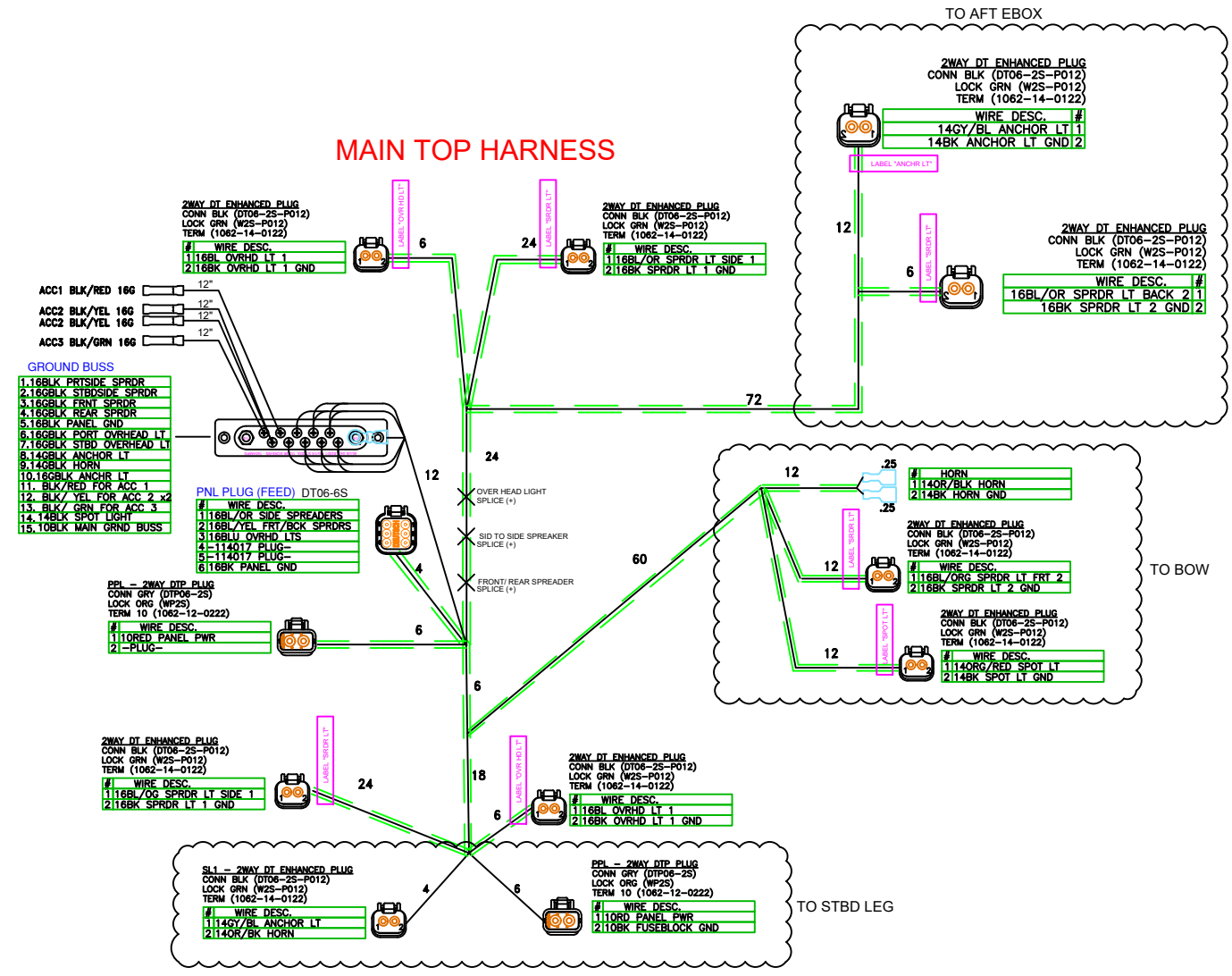
THIS DRAWING IS THE PROPERTY OF MACH CONNECTIONS. BOWLING GREEN, FL. ALL RIGHTS RESERVED. THIS DRAWING AND INFORMATION CONTAINED MAY NOT BE COPIED OR DISCLOSED TO OTHERS WITHOUT THE WRITTEN PERMISSION OF MACH CONNECTIONS.



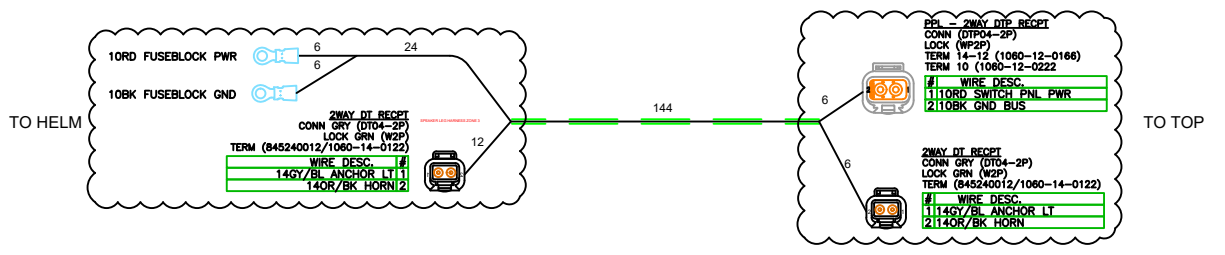
MAIN BREAKER PANEL(BACK)

REV #	DATE:	COMMENTS	BY:
REV #	DATE:	COMMENTS	BY:

MAIN TOP HARNESS

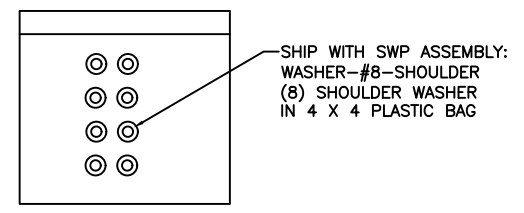
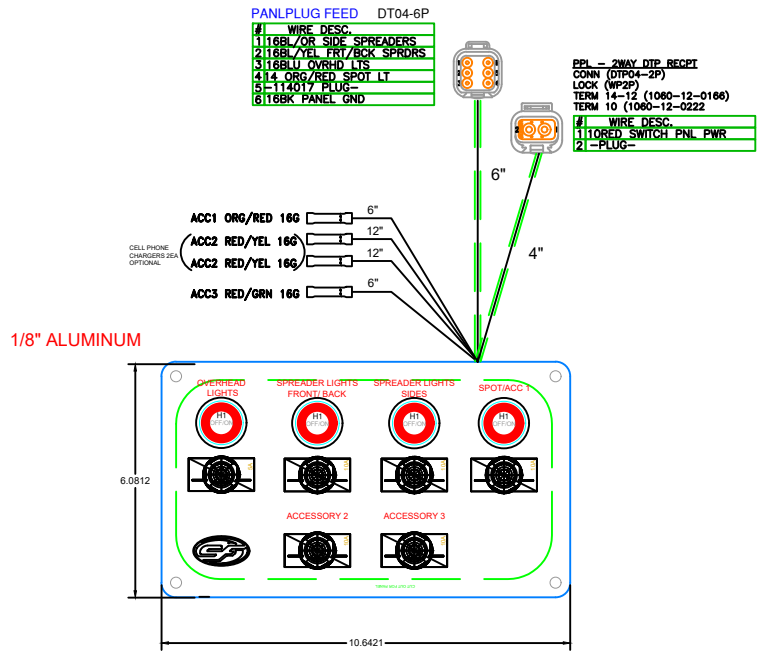


STBD LEG HARNESS



SFX-031H1 PLUG INTO MAIN

MAIN HARD TOP PANEL



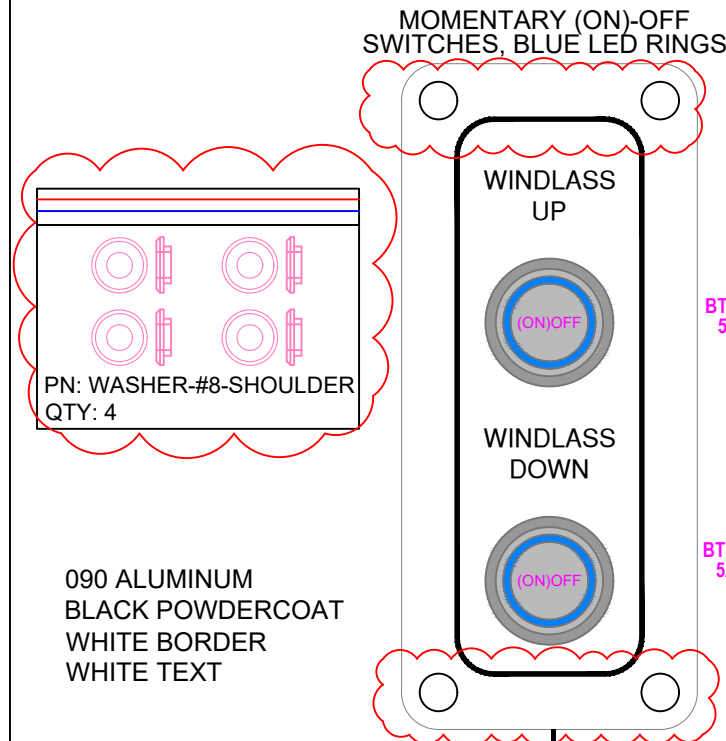
CUSTOMER:	SEAFOX BOATS
TITLE:	2022 MY HARNESS, ULTIMA TOP
MODEL:	22, 24, 26, 28, 32FT
PACER MRP#:	SFX-031
CREATOR:	C SIMS
PAGE:	1 OF 1
DATE:	07/17/20

THIS DRAWING IS THE PROPERTY OF PACER MARINE ENGINEERING, INC. SARASOTA, FL. ALL RIGHTS RESERVED. THIS DRAWING AND INFORMATION CONTAINED MAY NOT BE COPIED OR DISCLOSED TO OTHERS WITHOUT THE WRITTEN PERMISSION OF PACER MARINE, INC.



HARDTOP

REV #	DATE	COMMENTS	BY:
0	3/06/18	PRELIMINARY	MH
0	6/28/18	CHANGED THE SWITCHES TO BOCATECH	MH
A	1/23/19	CHANGED PANEL FROM LEXAN TO ALUM	MH
B	5/26/20	CHANGED TO GLOSS BLACK	MH
C	7/29/22	CHANGED MOUNTING HOLES AND ADDED SHOULDER WASHERS	MH

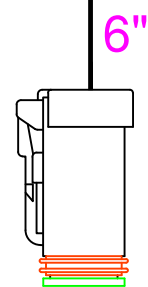


BTSSS-12MBL
5A SWITCH

BTSSS-12MBL
5A SWITCH

090 ALUMINUM
BLACK POWDERCOAT
WHITE BORDER
WHITE TEXT

MOMENTARY (ON-OFF)
SWITCHES, BLUE LED RINGS

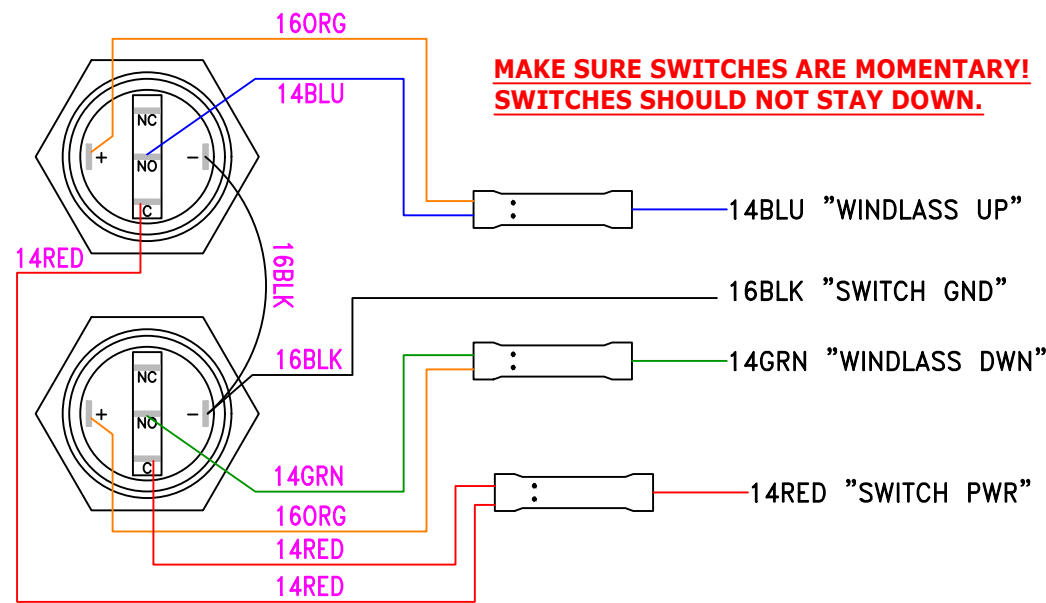


WND - WINDLASS

16BK "SWITCH GND"
14BL "WINDLASS UP"
14RD "SWITCH PWR"
14GN "WINDLASS DWN"

4WAY DEUTSCH DT ENHANCED PLUG W/SOC
CONNECTOR BLK (DT06-4S-P012)
LOCKING WEDGE GRN (W4S-P012)

**RED wires goes
on position "C"**



**MAKE SURE SWITCHES ARE MOMENTARY!
SWITCHES SHOULD NOT STAY DOWN.**

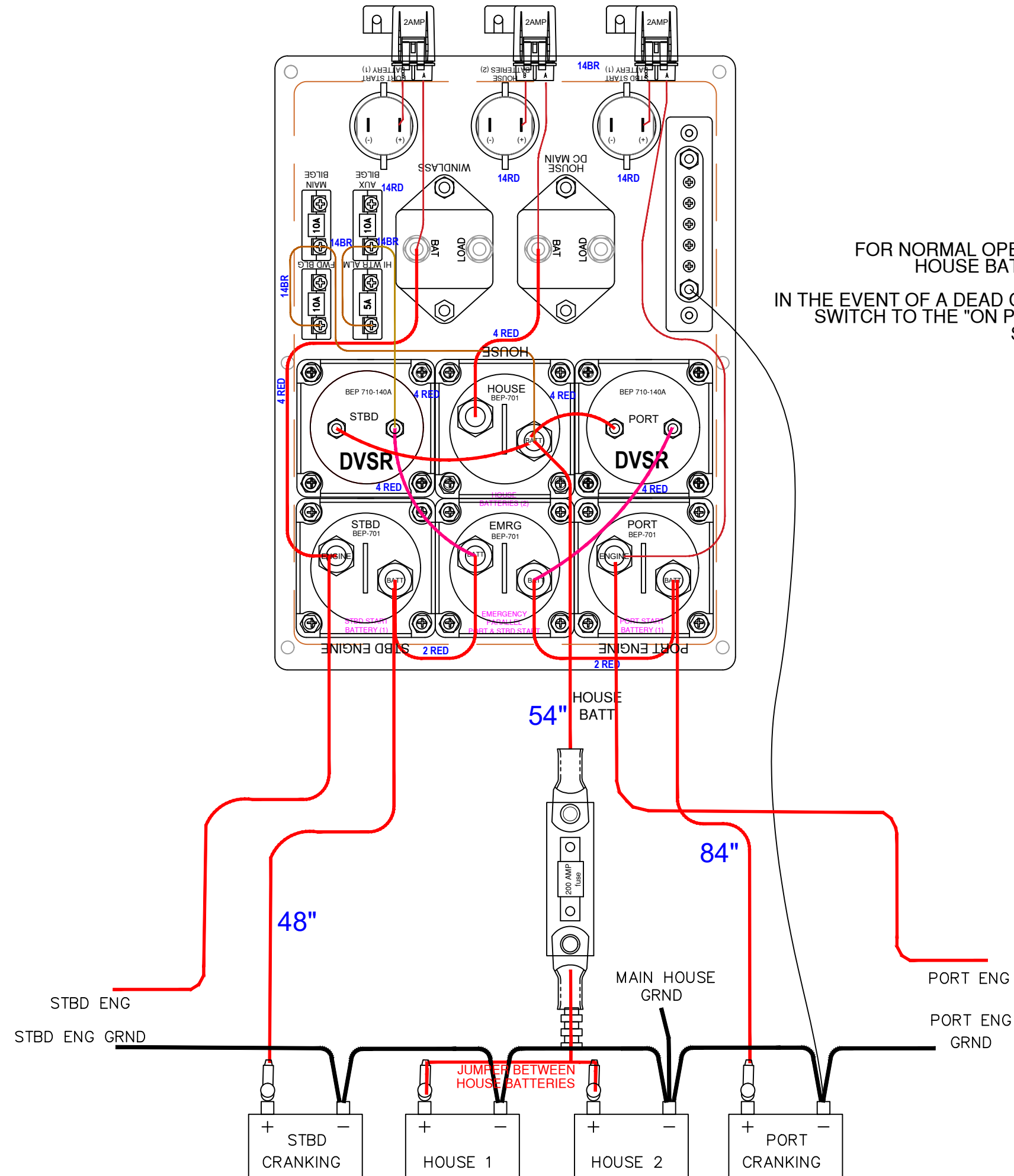
TEST DRAWER #48

SEAFOX PT# 7488

CUSTOMER:	SEA FOX BOATS
TITLE:	PANEL, WINDLASS SWITCH
MODEL:	288/328
PACER MRP#:	SFX-009-C
CREATOR:	MHERRERA
CUSTOMER PART NO.:	7488
ZPN:	ZP-SFX-105APT
DATE:	3/08/2018
PAGE:	1 OF 1

THIS DRAWING IS THE PROPERTY OF PACER MARINE ENGINEERING, INC. SARASOTA, FL. ALL RIGHTS RESERVED. THIS DRAWING AND INFORMATION CONTAINED MAY NOT BE COPIED OR DISCLOSED TO OTHERS WITHOUT THE WRITTEN PERMISSION OF PACER MARINE, INC.





FOR NORMAL OPERATION - TURN PORT START, STBD START, AND HOUSE BATTERY SWITCHES TO THE "ON POSITION".
 IN THE EVENT OF A DEAD CRANKING BATTERY, TURN THE "EMERGENCY PARALLEL" SWITCH TO THE "ON POSITION" TO PARALLEL THE "PORT START AND STBD START" BATTERIES TOGETHER.

288/328 TWIN ENGINE WITH 4 BATTERY SETUP

Seafox Boat Company

SCALE		DRAWN BY	
DATE	4/17/2024	D O L S E N	
SIZE		DRAWING NO.	